

RNF2 Recombinant Matched Antibody Pair, PBS Only

Catalog Number: **MP01591-3**

Capture Antibody Information

Catalog Number: 84793-6-PBS	Clone ID: 242181A11	Conjugate: Unconjugated
Host: Rabbit	Reactivity: human	Full name: ring finger protein 2
Isotype: IgG	GenBank: BC012583	Gene ID: 6045
Purification Method: Protein A purification	Immunogen Catalog Number: Ag8900	

Detection Antibody Information

Catalog Number: 84793-7-PBS	Clone ID: 242181G6	Conjugate: Unconjugated
Host: Rabbit	Reactivity: human	Full name: ring finger protein 2
Isotype: IgG	GenBank: BC012583	Gene ID: 6045
Purification Method: Protein A purification	Immunogen Catalog Number: Ag8900	

Applications

Tested Applications: Sandwich ELISA	Range: 0.156-10 ng/mL (Sandwich ELISA)	Recommended Dilutions: It is recommended that this reagent should be titrated in each testing system to obtain optimal results.
---	--	---

Product Information

MP01591-3 targets RNF2 in immunoassays as a matched antibody pair. Validated in Sandwich ELISA.

Capture antibody: RNF2 Recombinant antibody, PBS Only (Capture) 84793-6-PBS (242181A11). 100 µg. Concentration 1 mg/mL.

Detection antibody: RNF2 Recombinant antibody, PBS Only (Detector) 84793-7-PBS (242181G6). 100 µg. Concentration 1 mg/mL.

Unconjugated rabbit recombinant monoclonal antibody pair in PBS only storage buffer at a concentration of 1 mg/mL, ready for conjugation. Created using Proteintech's proprietary in-house recombinant technology. Recombinant production enables unrivalled batch-to-batch consistency, easy scale-up, and future security of supply.

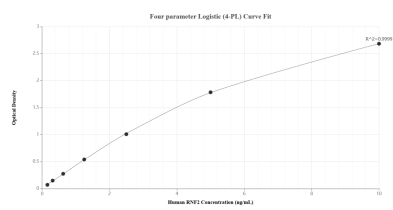
Matched antibody pairs are designed for use in a variety of assays and platforms that require matched antibody pairs.

Antibody use should be optimized for each application and assay.

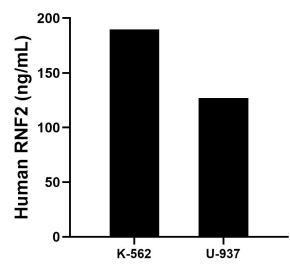
Storage

Storage:
Store at -80°C.
The product is shipped with ice packs. Upon receipt, store it immediately at -80°C
Storage buffer:
PBS only

Selected Validation Data



Sandwich ELISA standard curve of MP01591-3, Human RNF2 Recombinant Matched Antibody Pair - PBS only. 84793-6-PBS was coated to a plate as the capture antibody and incubated with serial dilutions of standard Ag8900. 84793-7-PBS was HRP conjugated as the detection antibody. Range: 0.156-10 ng/mL



The mean RNF2 concentration was determined to be 189.81 ng/mL in K-562 cell extract based on a 2.40 mg/mL extract load and 126.95 ng/mL in U-937 cell extract based on a 3.00 mg/mL extract load.