

# NDE1 Recombinant Matched Antibody Pair, PBS Only

Catalog Number: **MP01589-1**

## Capture Antibody Information

**Catalog Number:**  
84799-2-PBS  
**Host:**  
Rabbit  
**Isotype:**  
IgG  
**Purification Method:**  
Protein A purification

**Clone ID:**  
242340C11  
**Reactivity:**  
human  
**GenBank:**  
BC001421  
**Immunogen Catalog Number:**  
Ag0336

**Conjugate:**  
Unconjugated  
**Full name:**  
nudE nuclear distribution gene E homolog 1 (A. nidulans)  
**Gene ID:**  
54820

## Detection Antibody Information

**Catalog Number:**  
84799-4-PBS  
**Host:**  
Rabbit  
**Isotype:**  
IgG  
**Purification Method:**  
Protein A purification

**Clone ID:**  
242340H4  
**Reactivity:**  
human, mouse, rat  
**GenBank:**  
BC001421  
**Immunogen Catalog Number:**  
Ag0336

**Conjugate:**  
Unconjugated  
**Full name:**  
nudE nuclear distribution gene E homolog 1 (A. nidulans)  
**Gene ID:**  
54820

## Applications

**Tested Applications:**  
Cytometric bead array, Sandwich ELISA

**Range:**  
0.313-40 ng/mL (Cytometric Bead Array)  
0.156-10 ng/mL (Sandwich ELISA)

**Recommended Dilutions:**  
It is recommended that this reagent should be titrated in each testing system to obtain optimal results.

## Product Information

MP01589-1 targets NDE1 in immunoassays as a matched antibody pair. Validated in Cytometric bead array, Sandwich ELISA.

Capture antibody: NDE1 Recombinant antibody, PBS Only (Capture) 84799-2-PBS (242340C11). 100 µg. Concentration 1 mg/mL.

Detection antibody: NDE1 Recombinant antibody, PBS Only (Detector) 84799-4-PBS (242340H4). 100 µg. Concentration 1 mg/mL.

Unconjugated rabbit recombinant monoclonal antibody pair in PBS only storage buffer at a concentration of 1 mg/mL, ready for conjugation. Created using Proteintech's proprietary in-house recombinant technology. Recombinant production enables unrivalled batch-to-batch consistency, easy scale-up, and future security of supply.

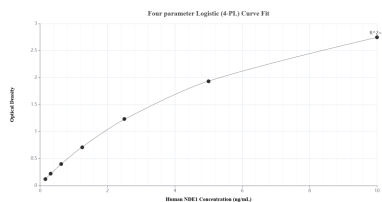
Matched antibody pairs are designed for use in a variety of assays and platforms that require matched antibody pairs.

Antibody use should be optimized for each application and assay.

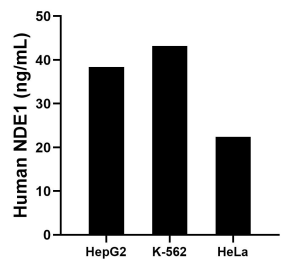
## Storage

**Storage:**  
Store at -80°C.  
**The product is shipped with ice packs. Upon receipt, store it immediately at -80°C**  
**Storage buffer:**  
PBS only

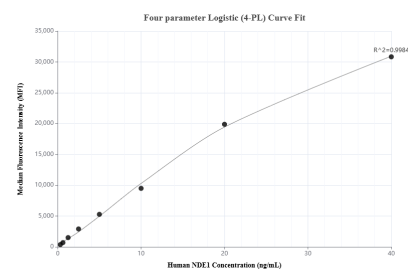
## Selected Validation Data



Sandwich ELISA standard curve of MP01589-1, Human NDE1 Recombinant Matched Antibody Pair - PBS only. 84799-2-PBS was coated to a plate as the capture antibody and incubated with serial dilutions of standard Ag0336. 84799-4-PBS was HRP conjugated as the detection antibody. Range: 0.156-10 ng/mL



The mean NDE1 concentration was determined to be 38.38 ng/mL in HepG2 cell extract based on a 2.50 mg/mL extract load, 43.20 ng/mL in K-562 cell extract based on a 1.00 mg/mL extract load and 22.42 ng/mL in HeLa cell extract based on a 1.50 mg/mL extract load.



Cytometric bead array standard curve of MP01589-1, NDE1 Recombinant Matched Antibody Pair, PBS Only. Capture antibody: 84799-2-PBS. Detection antibody: 84799-4-PBS. Standard: Ag0336. Range: 0.313-40 ng/mL