

APP Recombinant Matched Antibody Pair, PBS Only

Catalog Number: **MP01584-4**

Capture Antibody Information

Catalog Number:
84829-7-PBS
Host:
Rabbit
Isotype:
IgG
Purification Method:
Protein A purification

Clone ID:
250546G3
Reactivity:
human
GenBank:
NM_000484.3
Immunogen Catalog Number:
Eg3070

Conjugate:
Unconjugated
Full name:
amyloid beta (A4) precursor protein
Gene ID:
351

Detection Antibody Information

Catalog Number:
84829-6-PBS
Host:
Rabbit
Isotype:
IgG
Purification Method:
Protein A purification

Clone ID:
250546B3
Reactivity:
human
GenBank:
NM_000484.3
Immunogen Catalog Number:
Eg3070

Conjugate:
Unconjugated
Full name:
amyloid beta (A4) precursor protein
Gene ID:
351

Applications

Tested Applications:
Cytometric bead array

Range:
0.625-80 ng/mL (Cytometric Bead Array)

Recommended Dilutions:
It is recommended that this reagent should be titrated in each testing system to obtain optimal results.

Product Information

MP01584-4 targets APP in immunoassays as a matched antibody pair. Validated in Cytometric bead array.

Capture antibody: APP Recombinant antibody, PBS Only (Capture) 84829-7-PBS (250546G3). 100 µg. Concentration 1 mg/mL.

Detection antibody: APP Recombinant antibody, PBS Only (Detector) 84829-6-PBS (250546B3). 100 µg. Concentration 1 mg/mL.

Unconjugated rabbit recombinant monoclonal antibody pair in PBS only storage buffer at a concentration of 1 mg/mL, ready for conjugation. Created using Proteintech's proprietary in-house recombinant technology. Recombinant production enables unrivalled batch-to-batch consistency, easy scale-up, and future security of supply.

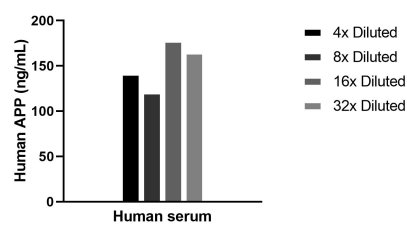
Matched antibody pairs are designed for use in a variety of assays and platforms that require matched antibody pairs.

Antibody use should be optimized for each application and assay.

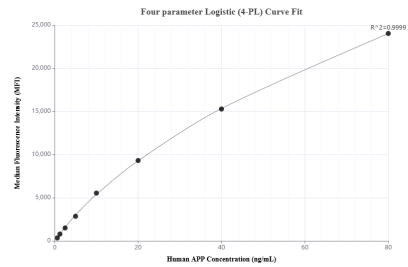
Storage

Storage:
Store at -80°C.
The product is shipped with ice packs. Upon receipt, store it immediately at -80°C
Storage buffer:
PBS only

Selected Validation Data



The mean APP concentration was determined to be 151.0 ng/mL in human serum.



Cytometric bead array standard curve of MP01584-4, APP Recombinant Matched Antibody Pair, PBS Only. Capture antibody: 84829-7-PBS. Detection antibody: 84829-6-PBS. Standard: Eg3070. Range: 0.625-80 ng/mL.