

Aggrecan Recombinant Matched Antibody Pair, PBS Only

Catalog Number: MP01577-3

Capture Antibody Information

Catalog Number:
84819-5-PBS
Host:
Rabbit
Isotype:
IgG
Purification Method:
Protein A purification

Clone ID:
250777C8
Reactivity:
human
GenBank:
NM_013227.4
Immunogen Catalog Number:
Eg2994

Conjugate:
Unconjugated
Full name:
aggrecan
Gene ID:
176

Detection Antibody Information

Catalog Number:
84819-6-PBS
Host:
Rabbit
Isotype:
IgG
Purification Method:
Protein A purification

Clone ID:
250777C7
Reactivity:
human
GenBank:
NM_013227.4
Immunogen Catalog Number:
Eg2994

Conjugate:
Unconjugated
Full name:
aggrecan
Gene ID:
176

Applications

Tested Applications:
Sandwich ELISA

Range:
0.625-40 ng/mL (Sandwich ELISA)

Recommended Dilutions:
It is recommended that this reagent should be titrated in each testing system to obtain optimal results.

Product Information

MP01577-3 targets Aggrecan in immunoassays as a matched antibody pair. Validated in Sandwich ELISA.

Capture antibody: Aggrecan Recombinant antibody, PBS Only (Capture) 84819-5-PBS (250777C8). 100 µg. Concentration 1 mg/mL.

Detection antibody: Aggrecan Recombinant antibody, PBS Only (Detector) 84819-6-PBS (250777C7). 100 µg. Concentration 1 mg/mL.

Unconjugated rabbit recombinant monoclonal antibody pair in PBS only storage buffer at a concentration of 1 mg/mL, ready for conjugation. Created using Proteintech's proprietary in-house recombinant technology. Recombinant production enables unrivalled batch-to-batch consistency, easy scale-up, and future security of supply.

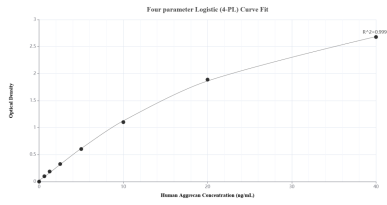
Matched antibody pairs are designed for use in a variety of assays and platforms that require matched antibody pairs.

Antibody use should be optimized for each application and assay.

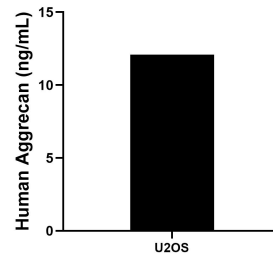
Storage

Storage:
Store at -80°C.
The product is shipped with ice packs. Upon receipt, store it immediately at -80°C
Storage buffer:
PBS only

Selected Validation Data



Sandwich ELISA standard curve of MP01577-3, Human Aggrecan Recombinant Matched Antibody Pair - PBS only. 84819-5-PBS was coated to a plate as the capture antibody and incubated with serial dilutions of standard Eg2994. 84819-6-PBS was HRP conjugated as the detection antibody. Range: 0.625-40 ng/mL



The mean Aggrecan concentration was determined to be 12.09 ng/mL in U2OS cell extract based on a 1.30 mg/mL extract load.