

Mouse CD71 Recombinant Matched Antibody Pair, PBS Only

Catalog Number: **MP01565-1**

Capture Antibody Information

Catalog Number: 84766-1-PBS	Clone ID: 242122B3	Conjugate: Unconjugated
Host: Rabbit	Reactivity: mouse	Full name: transferrin receptor
Isotype: IgG	GenBank: NM_011638.4	Gene ID: 22042
Purification Method: Protein A purification	Immunogen Catalog Number: Eg1064	

Detection Antibody Information

Catalog Number: 84766-2-PBS	Clone ID: 242122F12	Conjugate: Unconjugated
Host: Rabbit	Reactivity: mouse	Full name: transferrin receptor
Isotype: IgG	GenBank: NM_011638.4	Gene ID: 22042
Purification Method: Protein A purification	Immunogen Catalog Number: Eg1064	

Applications

Tested Applications: Cytometric bead array, Sandwich ELISA	Range: 0.781-100 ng/mL (Cytometric Bead Array) 0.625-40 ng/mL (Sandwich ELISA)	Recommended Dilutions: It is recommended that this reagent should be titrated in each testing system to obtain optimal results.
--	---	---

Product Information

MP01565-1 targets CD71 in immunoassays as a matched antibody pair. Validated in Cytometric bead array, Sandwich ELISA.

Capture antibody: Mouse Transferrin R Recombinant antibody, PBS Only (Capture) 84766-1-PBS (242122B3). 100 µg. Concentration 1 mg/mL.

Detection antibody: Mouse Transferrin R Recombinant antibody, PBS Only (Detector) 84766-2-PBS (242122F12). 100 µg. Concentration 1 mg/mL.

Unconjugated rabbit recombinant monoclonal antibody pair in PBS only storage buffer at a concentration of 1 mg/mL, ready for conjugation. Created using Proteintech's proprietary in-house recombinant technology. Recombinant production enables unrivalled batch-to-batch consistency, easy scale-up, and future security of supply.

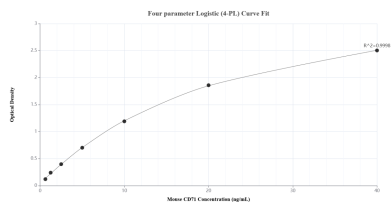
Matched antibody pairs are designed for use in a variety of assays and platforms that require matched antibody pairs.

Antibody use should be optimized for each application and assay.

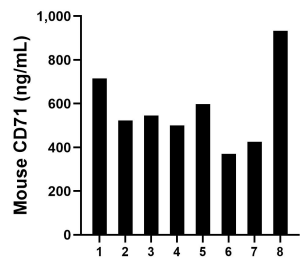
Storage

Storage:
Store at -80°C.
The product is shipped with ice packs. Upon receipt, store it immediately at -80°C
Storage buffer:
PBS only

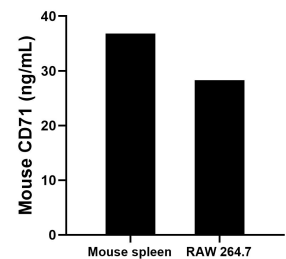
Selected Validation Data



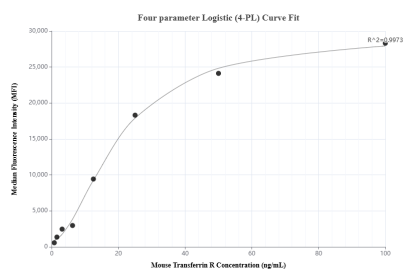
Sandwich ELISA standard curve of MP01565-1, Mouse CD71 Recombinant Matched Antibody Pair - PBS only. 84766-1-PBS was coated to a plate as the capture antibody and incubated with serial dilutions of standard Eg1064. 84766-2-PBS was HRP conjugated as the detection antibody. Range: 0.625-40 ng/mL



Serum of eight mice was measured. The CD71 concentration of detected samples was determined to be 576.45 ng/mL with a range of 370.91-932.73 ng/mL



The mean CD71 concentration was determined to be 36.82 ng/mL in mouse spleen tissue extract based on a 2.90 mg/mL extract load and 28.26 ng/mL in RAW 264.7 cell extract based on a 1.30 mg/mL extract load.



Cytometric bead array standard curve of MP01565-1, MOUSE CD71 Recombinant Matched Antibody Pair, PBS Only. Capture antibody: 84766-1-PBS. Detection antibody: 84766-2-PBS. Standard: Eg1064. Range: 0.781-100 ng/mL