

RB1CC1 Recombinant Matched Antibody Pair, PBS Only

Catalog Number: **MP01563-1**

Capture Antibody Information

Catalog Number: 84757-2-PBS	Clone ID: 242204D8	Conjugate: Unconjugated
Host: Rabbit	Reactivity: human	Full name: RB1-inducible coiled-coil 1
Isotype: IgG	GenBank: BC017556	Gene ID: 9821
Purification Method: Protein A purification	Immunogen Catalog Number: Ag10508	

Detection Antibody Information

Catalog Number: 84757-1-PBS	Clone ID: 242204A12	Conjugate: Unconjugated
Host: Rabbit	Reactivity: human	Full name: RB1-inducible coiled-coil 1
Isotype: IgG	GenBank: BC017556	Gene ID: 9821
Purification Method: Protein A purification	Immunogen Catalog Number: Ag10508	

Applications

Tested Applications: Cytometric bead array, Sandwich ELISA	Range: 3.125-100 ng/mL (Cytometric Bead Array) 78.1-5000 pg/mL (Sandwich ELISA)	Recommended Dilutions: It is recommended that this reagent should be titrated in each testing system to obtain optimal results.
--	--	---

Product Information

MP01563-1 targets RB1CC1 in immunoassays as a matched antibody pair. Validated in Cytometric bead array, Sandwich ELISA.

Capture antibody: RB1CC1 Recombinant antibody, PBS Only (Capture) 84757-2-PBS (242204D8). 100 µg. Concentration 1 mg/mL.

Detection antibody: RB1CC1 Recombinant antibody, PBS Only (Detector) 84757-1-PBS (242204A12). 100 µg. Concentration 1 mg/mL.

Unconjugated rabbit recombinant monoclonal antibody pair in PBS only storage buffer at a concentration of 1 mg/mL, ready for conjugation. Created using Proteintech's proprietary in-house recombinant technology. Recombinant production enables unrivalled batch-to-batch consistency, easy scale-up, and future security of supply.

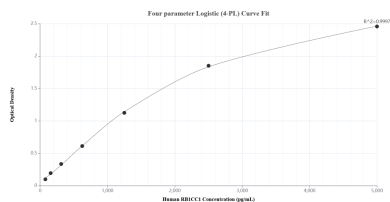
Matched antibody pairs are designed for use in a variety of assays and platforms that require matched antibody pairs.

Antibody use should be optimized for each application and assay.

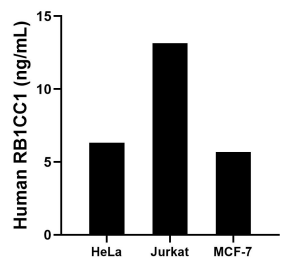
Storage

Storage:
Store at -80°C.
The product is shipped with ice packs. Upon receipt, store it immediately at -80°C
Storage buffer:
PBS only

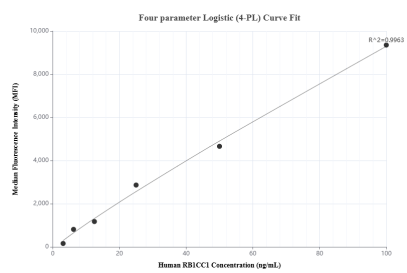
Selected Validation Data



Sandwich ELISA standard curve of MP01563-1, Human RB1CC1 Recombinant Matched Antibody Pair - PBS only. 84757-2-PBS was coated to a plate as the capture antibody and incubated with serial dilutions of standard Ag10508. 84757-1-PBS was HRP conjugated as the detection antibody. Range: 78.1-5000 pg/mL



The mean RB1CC1 concentration was determined to be 6.3 ng/mL in HeLa cell extract based on a 1.0 mg/mL extract load, 13.2 ng/mL in Jurkat cell extract based on a 1.5 mg/mL extract load and 5.7 ng/mL in MCF-7 cell extract based on a 1.2 mg/mL extract load.



Cytometric bead array standard curve of MP01563-1, RB1CC1 Recombinant Matched Antibody Pair, PBS Only. Capture antibody: 84757-2-PBS. Detection antibody: 84757-1-PBS. Standard: Ag10508. Range: 3.125-100 ng/mL