

SPTAN1 Recombinant Matched Antibody Pair, PBS Only

Catalog Number: **MP01560-3**

Capture Antibody Information

Catalog Number: 84761-4-PBS	Clone ID: 242104F11	Conjugate: Unconjugated
Host: Rabbit	Reactivity: human	Full name: spectrin, alpha, non-erythrocytic 1 (alpha-fodrin)
Isotype: IgG	GenBank: NM_003127.3	Gene ID: 6709
Purification Method: Protein A purification	Immunogen Catalog Number: Ag36472	

Detection Antibody Information

Catalog Number: 84761-3-PBS	Clone ID: 242104D6	Conjugate: Unconjugated
Host: Rabbit	Reactivity: human	Full name: spectrin, alpha, non-erythrocytic 1 (alpha-fodrin)
Isotype: IgG	GenBank: NM_003127.3	Gene ID: 6709
Purification Method: Protein A purification	Immunogen Catalog Number: Ag36472	

Applications

Tested Applications: Sandwich ELISA	Range: 78.1-5000 pg/mL (Sandwich ELISA)	Recommended Dilutions: It is recommended that this reagent should be titrated in each testing system to obtain optimal results.
---	---	---

Product Information

MP01560-3 targets SPTAN1 in immunoassays as a matched antibody pair. Validated in Sandwich ELISA.

Capture antibody: SPTAN1 Recombinant antibody, PBS Only (Capture) 84761-4-PBS (242104F11). 100 µg. Concentration 1 mg/mL.

Detection antibody: SPTAN1 Recombinant antibody, PBS Only (Detector) 84761-3-PBS (242104D6). 100 µg. Concentration 1 mg/mL.

Unconjugated rabbit recombinant monoclonal antibody pair in PBS only storage buffer at a concentration of 1 mg/mL, ready for conjugation. Created using Proteintech's proprietary in-house recombinant technology. Recombinant production enables unrivalled batch-to-batch consistency, easy scale-up, and future security of supply.

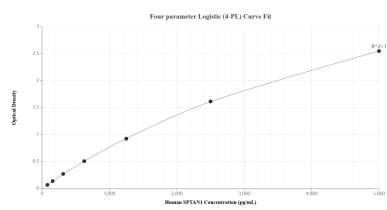
Matched antibody pairs are designed for use in a variety of assays and platforms that require matched antibody pairs.

Antibody use should be optimized for each application and assay.

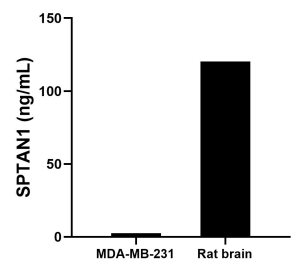
Storage

Storage:
Store at -80°C.
The product is shipped with ice packs. Upon receipt, store it immediately at -80°C
Storage buffer:
PBS only

Selected Validation Data



Sandwich ELISA standard curve of MP01560-3, Human SPTAN1 Recombinant Matched Antibody Pair - PBS only. 84761-4-PBS was coated to a plate as the capture antibody and incubated with serial dilutions of standard Ag36472. 84761-3-PBS was HRP conjugated as the detection antibody. Range: 78.1-5000 pg/mL.



The mean SPTAN1 concentration was determined to be 2.5 ng/mL in MDA-MB-231 cell extract based on a 1.9 mg/mL extract load and 120.3 ng/mL in rat brain tissue extract based on a 1.6 mg/mL extract load.