

Mouse Glycophorin A Recombinant Matched Antibody Pair, PBS Only

Catalog Number: **MP01550-2**

Capture Antibody Information

Catalog Number:

84753-1-PBS

Host:

Rabbit

Isotype:

IgG

Purification Method:

Protein A purification

Clone ID:

242129A3

Reactivity:

mouse

GenBank:

NM_010369.3

Conjugate:

Unconjugated

Full name:

glycophorin A

Gene ID:

14934

Detection Antibody Information

Catalog Number:

84753-3-PBS

Host:

Rabbit

Isotype:

IgG

Purification Method:

Protein A purification

Clone ID:

242129D4

Reactivity:

mouse

GenBank:

NM_010369.3

Conjugate:

Unconjugated

Full name:

glycophorin A

Gene ID:

14934

Applications

Tested Applications:

Cytometric bead array

Range:

0.313-40 ng/mL (Cytometric Bead Array)

Recommended Dilutions:

It is recommended that this reagent should be titrated in each testing system to obtain optimal results.

Product Information

MP01550-2 targets Glycophorin A in immunoassays as a matched antibody pair. Validated in Cytometric bead array.

Capture antibody: Mouse Glycophorin A Recombinant antibody, PBS Only (Capture) 84753-1-PBS (242129A3). 100 μ g. Concentration 1 mg/mL.

Detection antibody: Mouse Glycophorin A Recombinant antibody, PBS Only (Detector) 84753-3-PBS (242129D4). 100 μ g. Concentration 1 mg/mL.

Unconjugated rabbit recombinant monoclonal antibody pair in PBS only storage buffer at a concentration of 1 mg/mL, ready for conjugation. Created using Proteintech's proprietary in-house recombinant technology. Recombinant production enables unrivalled batch-to-batch consistency, easy scale-up, and future security of supply.

Matched antibody pairs are designed for use in a variety of assays and platforms that require matched antibody pairs.

Antibody use should be optimized for each application and assay.

Storage

Storage:

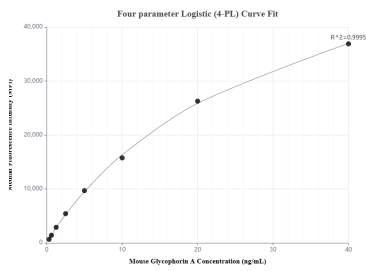
Store at -80°C.

The product is shipped with ice packs. Upon receipt, store it immediately at -80°C

Storage buffer:

PBS only

Selected Validation Data



Cytometric bead array standard curve of MP01550-2, MOUSE Glycophorin A Recombinant Matched Antibody Pair, PBS Only. Capture antibody: 84753-1-PBS. Detection antibody: 84753-3-PBS. Standard: Eg1886. Range: 0.313-40 ng/mL