

# DR5 Recombinant Matched Antibody Pair, PBS Only

Catalog Number: **MP01541-1**

## Capture Antibody Information

**Catalog Number:**  
84784-3-PBS  
**Host:**  
Rabbit  
**Isotype:**  
IgG  
**Purification Method:**  
Protein A purification

**Clone ID:**  
242319H8  
**Reactivity:**  
human  
**GenBank:**  
BC001281

**Conjugate:**  
Unconjugated  
**Full name:**  
tumor necrosis factor receptor superfamily, member 10b  
**Gene ID:**  
8795

## Detection Antibody Information

**Catalog Number:**  
84784-1-PBS  
**Host:**  
Rabbit  
**Isotype:**  
IgG  
**Purification Method:**  
Protein A purification

**Clone ID:**  
242319B12  
**Reactivity:**  
human  
**GenBank:**  
BC001281

**Conjugate:**  
Unconjugated  
**Full name:**  
tumor necrosis factor receptor superfamily, member 10b  
**Gene ID:**  
8795

## Applications

**Tested Applications:**  
Cytometric bead array, Sandwich ELISA

**Range:**  
0.625-20 ng/mL (Cytometric Bead Array)  
9.77-625 pg/mL (Sandwich ELISA)

**Recommended Dilutions:**  
It is recommended that this reagent should be titrated in each testing system to obtain optimal results.

## Product Information

MP01541-1 targets DR5 in immunoassays as a matched antibody pair. Validated in Cytometric bead array, Sandwich ELISA.

Capture antibody: TNFRSF10B Recombinant antibody, PBS Only (Capture) 84784-3-PBS (242319H8). 100 µg. Concentration 1 mg/mL.

Detection antibody: TNFRSF10B Recombinant antibody, PBS Only (Detector) 84784-1-PBS (242319B12). 100 µg. Concentration 1 mg/mL.

Unconjugated rabbit recombinant monoclonal antibody pair in PBS only storage buffer at a concentration of 1 mg/mL, ready for conjugation. Created using Proteintech's proprietary in-house recombinant technology. Recombinant production enables unrivalled batch-to-batch consistency, easy scale-up, and future security of supply.

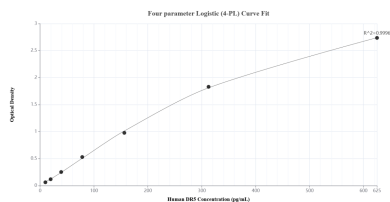
Matched antibody pairs are designed for use in a variety of assays and platforms that require matched antibody pairs.

Antibody use should be optimized for each application and assay.

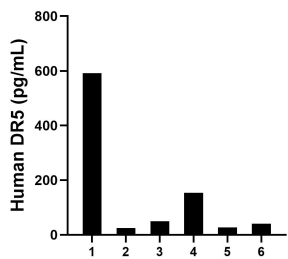
## Storage

**Storage:**  
Store at -80°C.  
**The product is shipped with ice packs. Upon receipt, store it immediately at -80°C**  
**Storage buffer:**  
PBS only

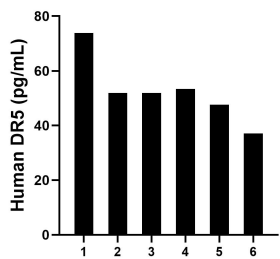
## Selected Validation Data



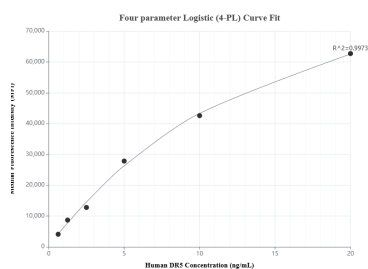
Sandwich ELISA standard curve of MP01541-1, Human DR5 Recombinant Matched Antibody Pair - PBS only. 84784-3-PBS was coated to a plate as the capture antibody and incubated with serial dilutions of standard Eg1648. 84784-1-PBS was HRP conjugated as the detection antibody. Range: 9.77-625 pg/mL



Serum of six individual healthy human donors was measured. The DR5 concentration of detected samples was determined to be 147.8 pg/mL with a range of 25.4-591.3 pg/mL



Plasma of six individual healthy human donors was measured. The DR5 concentration of detected samples was determined to be 52.6 pg/mL with a range of 37.1-73.8 pg/mL



Cytometric bead array standard curve of MP01541-1, DR5 Recombinant Matched Antibody Pair, PBS Only. Capture antibody: 84784-3-PBS. Detection antibody: 84784-1-PBS. Standard: Eg1648. Range: 0.625-20 ng/mL