

PER1 Recombinant Matched Antibody Pair, PBS Only

Catalog Number: **MP01530-1**

Capture Antibody Information

Catalog Number: 84730-1-PBS	Clone ID: 242096A4	Conjugate: Unconjugated
Host: Rabbit	Reactivity: human	Full name: period homolog 1 (Drosophila)
Isotype: IgG	GenBank: BC028207	Gene ID: 5187
Purification Method: Protein A purification	Immunogen Catalog Number: Ag4249	

Detection Antibody Information

Catalog Number: 84730-3-PBS	Clone ID: 242096F8	Conjugate: Unconjugated
Host: Rabbit	Reactivity: human	Full name: period homolog 1 (Drosophila)
Isotype: IgG	GenBank: BC028207	Gene ID: 5187
Purification Method: Protein A purification	Immunogen Catalog Number: Ag4249	

Applications

Tested Applications: Cytometric bead array, Sandwich ELISA	Range: 0.313-40 ng/mL (Cytometric Bead Array) 156-5000 pg/mL (Sandwich ELISA)	Recommended Dilutions: It is recommended that this reagent should be titrated in each testing system to obtain optimal results.
--	--	---

Product Information

MP01530-1 targets PER1 in immunoassays as a matched antibody pair. Validated in Cytometric bead array, Sandwich ELISA.

Capture antibody: PER1 Recombinant antibody, PBS Only (Capture) 84730-1-PBS (242096A4). 100 µg. Concentration 1 mg/mL.

Detection antibody: PER1 Recombinant antibody, PBS Only (Detector) 84730-3-PBS (242096F8). 100 µg. Concentration 1 mg/mL.

Unconjugated rabbit recombinant monoclonal antibody pair in PBS only storage buffer at a concentration of 1 mg/mL, ready for conjugation. Created using Proteintech's proprietary in-house recombinant technology. Recombinant production enables unrivalled batch-to-batch consistency, easy scale-up, and future security of supply.

Matched antibody pairs are designed for use in a variety of assays and platforms that require matched antibody pairs.

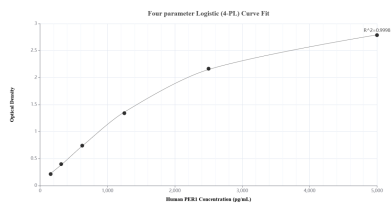
Antibody use should be optimized for each application and assay.

Storage

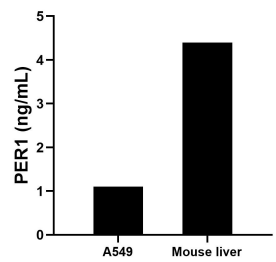
Storage:
Store at -80°C.
The product is shipped with ice packs. Upon receipt, store it immediately at -80°C

Storage buffer:
PBS only

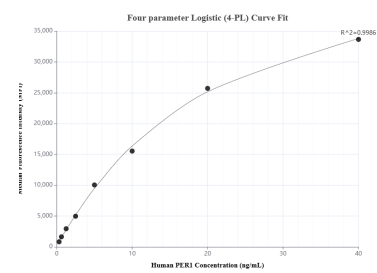
Selected Validation Data



Sandwich ELISA standard curve of MP01530-1, Human PER1 Recombinant Matched Antibody Pair - PBS only. 84730-1-PBS was coated to a plate as the capture antibody and incubated with serial dilutions of standard Ag4249. 84730-3-PBS was HRP conjugated as the detection antibody. Range: 156-5000 pg/mL.



The mean PER1 concentration was determined to be 1.1 ng/mL in A549 cell extract based on a 2.3 mg/mL extract load and 4.4 ng/mL in mouse liver tissue extract based on a 3.7 mg/mL extract load.



Cytometric bead array standard curve of MP01530-1, PER1 Recombinant Matched Antibody Pair, PBS Only. Capture antibody: 84730-1-PBS. Detection antibody: 84730-3-PBS. Standard: Ag4249. Range: 0.313-40 ng/mL.