

AEG-1/MTDH Recombinant Matched Antibody Pair, PBS Only

Catalog Number: **MP01497-1**

Capture Antibody Information

Catalog Number: 84686-1-PBS	Clone ID: 242110C11	Conjugate: Unconjugated
Host: Rabbit	Reactivity: human	Full name: metadherin
Isotype: IgG	GenBank: BC045642	Gene ID: 92140
Purification Method: Protein A purification	Immunogen Catalog Number: Ag4840	

Detection Antibody Information

Catalog Number: 84686-2-PBS	Clone ID: 242110E1	Conjugate: Unconjugated
Host: Rabbit	Reactivity: human	Full name: metadherin
Isotype: IgG	GenBank: BC045642	Gene ID: 92140
Purification Method: Protein A purification	Immunogen Catalog Number: Ag4840	

Applications

Tested Applications: Cytometric bead array, Sandwich ELISA	Range: 0.781-100 ng/mL (Cytometric Bead Array) 39.1-2500 pg/mL (Sandwich ELISA)	Recommended Dilutions: It is recommended that this reagent should be titrated in each testing system to obtain optimal results.
---	---	--

Product Information

MP01497-1 targets AEG-1/MTDH in immunoassays as a matched antibody pair. Validated in Cytometric bead array, Sandwich ELISA.

Capture antibody: AEG-1 Recombinant antibody, PBS Only (Capture) 84686-1-PBS (242110C11). 100 µg. Concentration 1 mg/mL.

Detection antibody: AEG-1 Recombinant antibody, PBS Only (Detector) 84686-2-PBS (242110E1). 100 µg. Concentration 1 mg/mL.

Unconjugated rabbit recombinant monoclonal antibody pair in PBS only storage buffer at a concentration of 1 mg/mL, ready for conjugation. Created using Proteintech's proprietary in-house recombinant technology. Recombinant production enables unrivalled batch-to-batch consistency, easy scale-up, and future security of supply.

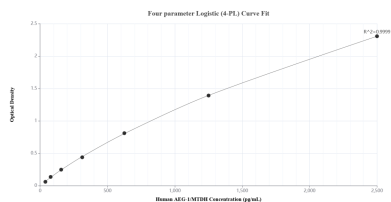
Matched antibody pairs are designed for use in a variety of assays and platforms that require matched antibody pairs.

Antibody use should be optimized for each application and assay.

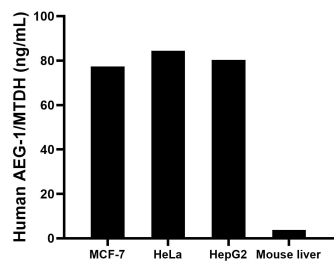
Storage

Storage:
Store at -80°C.
The product is shipped with ice packs. Upon receipt, store it immediately at -80°C
Storage buffer:
PBS only

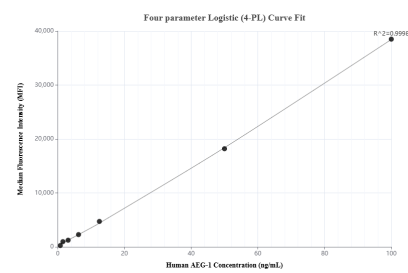
Selected Validation Data



Sandwich ELISA standard curve of MP01497-1, Human AEG-1/MTDH Recombinant Matched Antibody Pair - PBS only. 84686-1-PBS was coated to a plate as the capture antibody and incubated with serial dilutions of standard Ag4840. 84686-2-PBS was HRP conjugated as the detection antibody. Range: 39.1-2500 pg/mL



The mean AEG-1/MTDH concentration was determined to be 77.3 ng/mL in MCF-7 cell extract based on a 1.2 mg/mL extract load, 84.5 ng/mL in HeLa cell extract based on a 1.3 mg/mL extract load, 80.3 ng/mL in HepG2 cell extract based on a 3.3 mg/mL extract load and 3.8 ng/mL in mouse liver tissue extract based on a 3.7 mg/mL extract load.



Cytometric bead array standard curve of MP01497-1, AEG-1/MTDH Recombinant Matched Antibody Pair, PBS Only. Capture antibody: 84686-1-PBS. Detection antibody: 84686-2-PBS. Standard: Ag4840. Range: 0.781-100 ng/mL