

# CST5 Recombinant Matched Antibody Pair, PBS Only

Catalog Number: **MP01490-1**

## Capture Antibody Information

Catalog Number: 84678-3-PBS	Clone ID: 241564F1	Conjugate: Unconjugated
Host: Rabbit	Reactivity: human	Full name: cystatin D
Isotype: IgG	GenBank: BC069514	Gene ID: 1473
Purification Method: Protein A purification	Immunogen Catalog Number: Ag34412	

## Detection Antibody Information

Catalog Number: 84678-2-PBS	Clone ID: 241564E7	Conjugate: Unconjugated
Host: Rabbit	Reactivity: human	Full name: cystatin D
Isotype: IgG	GenBank: BC069514	Gene ID: 1473
Purification Method: Protein A purification	Immunogen Catalog Number: Ag34412	

## Applications

Tested Applications: Cytometric bead array, Sandwich ELISA	Range: 0.781-100 ng/mL (Cytometric Bead Array) 0.469-15 ng/mL (Sandwich ELISA)	Recommended Dilutions: It is recommended that this reagent should be titrated in each testing system to obtain optimal results.
---	--	--

## Product Information

MP01490-1 targets CST5 in immunoassays as a matched antibody pair. Validated in Cytometric bead array, Sandwich ELISA.

Capture antibody: CST5 Recombinant antibody, PBS Only (Capture) 84678-3-PBS (241564F1). 100 µg. Concentration 1 mg/mL.

Detection antibody: CST5 Recombinant antibody, PBS Only (Detector) 84678-2-PBS (241564E7). 100 µg. Concentration 1 mg/mL.

Unconjugated rabbit recombinant monoclonal antibody pair in PBS only storage buffer at a concentration of 1 mg/mL, ready for conjugation. Created using Proteintech's proprietary in-house recombinant technology. Recombinant production enables unrivalled batch-to-batch consistency, easy scale-up, and future security of supply.

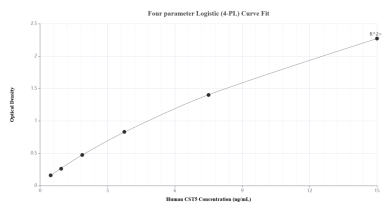
Matched antibody pairs are designed for use in a variety of assays and platforms that require matched antibody pairs.

Antibody use should be optimized for each application and assay.

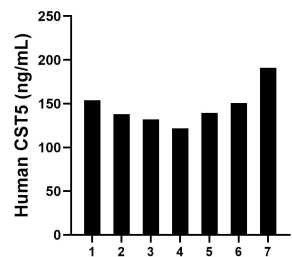
## Storage

Storage:  
Store at -80°C.  
**The product is shipped with ice packs. Upon receipt, store it immediately at -80°C**  
Storage buffer:  
PBS only

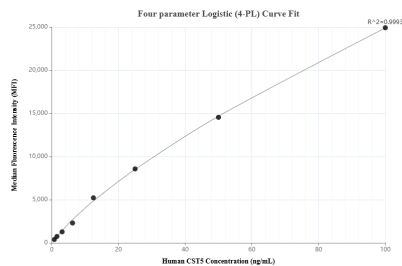
## Selected Validation Data



Sandwich ELISA standard curve of MP01490-1, Human CST5 Recombinant Matched Antibody Pair - PBS only. 84678-3-PBS was coated to a plate as the capture antibody and incubated with serial dilutions of standard Ag34412. 84678-2-PBS was HRP conjugated as the detection antibody. Range: 0.469-15 ng/mL.



Saliva of seven individual healthy human donors was measured. The CST5 concentration of detected samples was determined to be 146.65 ng/mL with a range of 121.75-191.04 ng/mL.



Cytometric bead array standard curve of MP01490-1, CST5 Recombinant Matched Antibody Pair, PBS Only. Capture antibody: 84678-3-PBS. Detection antibody: 84678-2-PBS. Standard: Ag34412. Range: 0.781-100 ng/mL.