

# CD107a / LAMP1 Recombinant Matched Antibody Pair, PBS Only

Catalog Number: **MP01489-1**

## Capture Antibody Information

**Catalog Number:**  
84658-1-PBS

**Host:**  
Rabbit

**Isotype:**  
IgG

**Purification Method:**  
Protein A purification

**Clone ID:**  
242116A6

**Reactivity:**  
human

**GenBank:**  
NM\_005561.4

**Conjugate:**  
Unconjugated

**Full name:**  
lysosomal-associated membrane protein 1

**Gene ID:**  
3916

## Detection Antibody Information

**Catalog Number:**  
84658-2-PBS

**Host:**  
Rabbit

**Isotype:**  
IgG

**Purification Method:**  
Protein A purification

**Clone ID:**  
242116A8

**Reactivity:**  
human

**GenBank:**  
NM\_005561.4

**Conjugate:**  
Unconjugated

**Full name:**  
lysosomal-associated membrane protein 1

**Gene ID:**  
3916

## Applications

**Tested Applications:**  
Cytometric bead array, Sandwich ELISA

**Range:**  
0.781-100 ng/mL (Cytometric Bead Array)  
0.156-10 ng/mL (Sandwich ELISA)

**Recommended Dilutions:**  
It is recommended that this reagent should be titrated in each testing system to obtain optimal results.

## Product Information

MP01489-1 targets CD107a / LAMP1 in immunoassays as a matched antibody pair. Validated in Cytometric bead array, Sandwich ELISA.

Capture antibody: LAMP1 Recombinant antibody, PBS Only (Capture) 84658-1-PBS (242116A6). 100 µg. Concentration 1 mg/mL.

Detection antibody: LAMP1 Recombinant antibody, PBS Only (Detector) 84658-2-PBS (242116A8). 100 µg. Concentration 1 mg/mL.

Unconjugated rabbit recombinant monoclonal antibody pair in PBS only storage buffer at a concentration of 1 mg/mL, ready for conjugation. Created using Proteintech's proprietary in-house recombinant technology. Recombinant production enables unrivalled batch-to-batch consistency, easy scale-up, and future security of supply.

Matched antibody pairs are designed for use in a variety of assays and platforms that require matched antibody pairs.

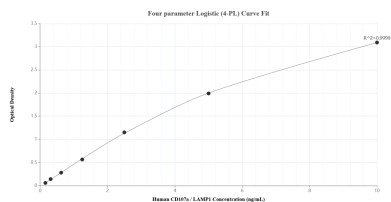
Antibody use should be optimized for each application and assay.

## Storage

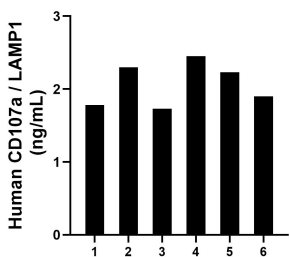
**Storage:**  
Store at -80°C.  
**The product is shipped with ice packs. Upon receipt, store it immediately at -80°C**

**Storage buffer:**  
PBS only

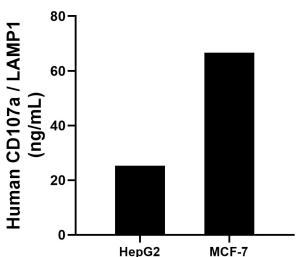
## Selected Validation Data



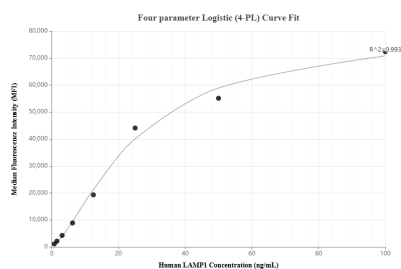
Sandwich ELISA standard curve of MP01489-1, Human CD107a / LAMP1 Recombinant Matched Antibody Pair - PBS only. 84658-1-PBS was coated to a plate as the capture antibody and incubated with serial dilutions of standard Eg2611. 84658-2-PBS was HRP conjugated as the detection antibody. Range: 0.156-10 ng/mL



Plasma of six individual healthy human donors was measured. The CD107a / LAMP1 concentration of detected samples was determined to be 2.07 ng/mL with a range of 1.73-2.45 ng/mL



The mean CD107a / LAMP1 concentration was determined to be 25.30 ng/mL in HepG2 cell extract based on a 1.00 mg/mL extract load and 66.62 ng/mL in MCF-7 cell extract based on a 1.20 mg/mL extract load.



Cytometric bead array standard curve of MP01489-1, CD107a / LAMP1 Recombinant Matched Antibody Pair, PBS Only. Capture antibody: 84658-1-PBS. Detection antibody: 84658-2-PBS. Standard: Eg2611. Range: 0.781-100 ng/mL