

CXCR3 Recombinant Matched Antibody Pair, PBS Only

Catalog Number: **MP01488-2**

Capture Antibody Information

Catalog Number:

84655-2-PBS

Host:

Rabbit

Isotype:

IgG

Purification Method:

Protein A purification

Clone ID:

241790A9

Reactivity:

human

GenBank:

BC034403

Conjugate:

Unconjugated

Full name:

chemokine (C-X-C motif) receptor 3

Gene ID:

2833

Detection Antibody Information

Catalog Number:

84655-1-PBS

Host:

Rabbit

Isotype:

IgG

Purification Method:

Protein A purification

Clone ID:

241790A8

Reactivity:

human

GenBank:

BC034403

Conjugate:

Unconjugated

Full name:

chemokine (C-X-C motif) receptor 3

Gene ID:

2833

Applications

Tested Applications:

Cytometric bead array, Sandwich ELISA

Range:

0.313-40 ng/mL (Cytometric Bead Array)
0.781-50 ng/mL (Sandwich ELISA)

Recommended Dilutions:

It is recommended that this reagent should be titrated in each testing system to obtain optimal results.

Product Information

MP01488-2 targets CXCR3 in immunoassays as a matched antibody pair. Validated in Cytometric bead array, Sandwich ELISA.

Capture antibody: CXCR3 Recombinant antibody, PBS Only (Capture) 84655-2-PBS (241790A9). 100 µg. Concentration 1 mg/mL.

Detection antibody: CXCR3 Recombinant antibody, PBS Only (Detector) 84655-1-PBS (241790A8). 100 µg. Concentration 1 mg/mL.

Unconjugated rabbit recombinant monoclonal antibody pair in PBS only storage buffer at a concentration of 1 mg/mL, ready for conjugation. Created using Proteintech's proprietary in-house recombinant technology. Recombinant production enables unrivalled batch-to-batch consistency, easy scale-up, and future security of supply.

Matched antibody pairs are designed for use in a variety of assays and platforms that require matched antibody pairs.

Antibody use should be optimized for each application and assay.

Storage

Storage:

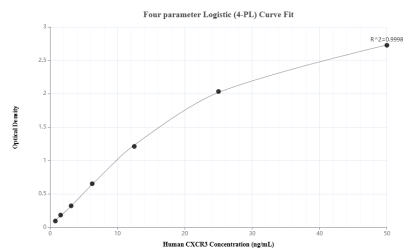
Store at -80°C.

The product is shipped with ice packs. Upon receipt, store it immediately at -80°C

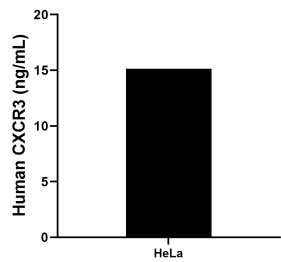
Storage buffer:

PBS only

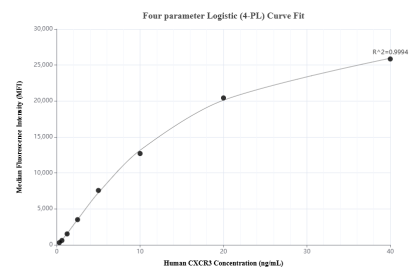
Selected Validation Data



Sandwich ELISA standard curve of MP01488-2, Human CXCR3 Recombinant Matched Antibody Pair - PBS only. 84655-2-PBS was coated to a plate as the capture antibody and incubated with serial dilutions of standard Eg2269. 84655-1-PBS was HRP conjugated as the detection antibody. Range: 0.781-50 ng/mL



The mean CXCR3 concentration was determined to be 15.15 ng/mL in HeLa cell extract based on a 1.5 mg/mL extract load.



Cytometric bead array standard curve of MP01488-2, CXCR3 Recombinant Matched Antibody Pair, PBS Only. Capture antibody: 84655-2-PBS. Detection antibody: 84655-1-PBS. Standard: Eg2269. Range: 0.313-40 ng/mL