

# Rat E-Cadherin Recombinant Matched Antibody Pair, PBS Only

Catalog Number: **MP01483-1**

## Capture Antibody Information

<b>Catalog Number:</b> 84646-1-PBS	<b>Clone ID:</b> 242018A8	<b>Conjugate:</b> Unconjugated
<b>Host:</b> Rabbit	<b>Reactivity:</b> rat	<b>Full name:</b> cadherin 1
<b>Isotype:</b> IgG	<b>GenBank:</b> NM_031334.1	<b>Gene ID:</b> 83502
<b>Purification Method:</b> Protein A purification	<b>Immunogen Catalog Number:</b> Eg1229	

## Detection Antibody Information

<b>Catalog Number:</b> 84646-3-PBS	<b>Clone ID:</b> 242018D3	<b>Conjugate:</b> Unconjugated
<b>Host:</b> Rabbit	<b>Reactivity:</b> human, rat	<b>Full name:</b> cadherin 1
<b>Isotype:</b> IgG	<b>GenBank:</b> NM_031334.1	<b>Gene ID:</b> 83502
<b>Purification Method:</b> Protein A purification	<b>Immunogen Catalog Number:</b> Eg1229	

## Applications

<b>Tested Applications:</b> Cytometric bead array, Sandwich ELISA	<b>Range:</b> 0.781-100 ng/mL (Cytometric Bead Array) 78.1-5000 pg/mL (Sandwich ELISA)	<b>Recommended Dilutions:</b> It is recommended that this reagent should be titrated in each testing system to obtain optimal results.
---	---	---

## Product Information

MP01483-1 targets E-Cadherin in immunoassays as a matched antibody pair. Validated in Cytometric bead array, Sandwich ELISA.

Capture antibody: Rat E-Cadherin Recombinant antibody, PBS Only (Capture) 84646-1-PBS (242018A8). 100 µg. Concentration 1 mg/mL.

Detection antibody: Rat E-Cadherin Recombinant antibody, PBS Only (Detector) 84646-3-PBS (242018D3). 100 µg. Concentration 1 mg/mL.

Unconjugated rabbit recombinant monoclonal antibody pair in PBS only storage buffer at a concentration of 1 mg/mL, ready for conjugation. Created using Proteintech's proprietary in-house recombinant technology. Recombinant production enables unrivalled batch-to-batch consistency, easy scale-up, and future security of supply.

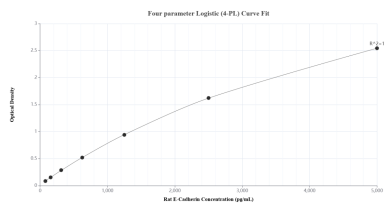
Matched antibody pairs are designed for use in a variety of assays and platforms that require matched antibody pairs.

Antibody use should be optimized for each application and assay.

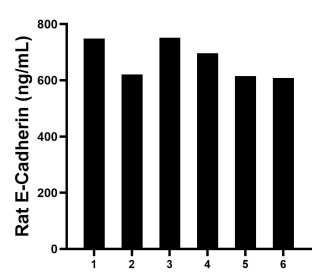
## Storage

**Storage:**  
Store at -80°C.  
**The product is shipped with ice packs. Upon receipt, store it immediately at -80°C**  
**Storage buffer:**  
PBS only

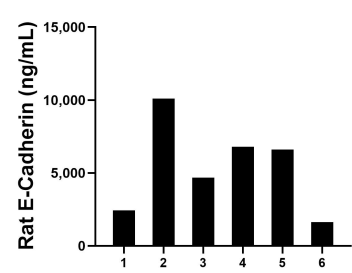
Selected Validation Data



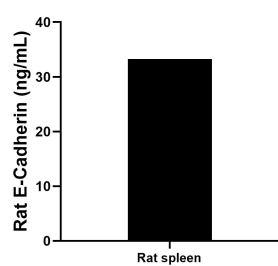
Sandwich ELISA standard curve of MP01483-1, Rat E-Cadherin Recombinant Matched Antibody Pair - PBS only. 84646-1-PBS was coated to a plate as the capture antibody and incubated with serial dilutions of standard Eg1229. 84646-3-PBS was HRP conjugated as the detection antibody. Range: 78.1-5000 pg/mL



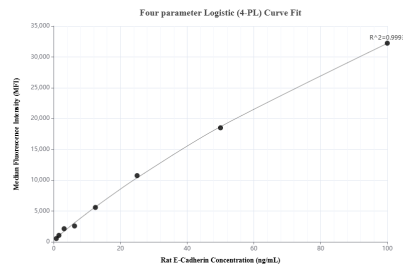
Serum of six rats was measured. The E-Cadherin concentration of detected samples was determined to be 673.3 ng/mL with a range of 608.2-748.3 ng/mL



Urine of six rats was measured. The E-Cadherin concentration of detected samples was determined to be 5,367.9 ng/mL with a range of 1,627.0-10,091.3 ng/mL



The mean E-Cadherin concentration was determined to be 33.3 ng/mL in rat spleen tissue extract based on a 2.7 mg/mL extract load.



Cytometric bead array standard curve of MP01483-1, RAT E-Cadherin Recombinant Matched Antibody Pair, PBS Only. Capture antibody: 84646-1-PBS. Detection antibody: 84646-3-PBS. Standard: Eg1229. Range: 0.781-100 ng/mL