

# EPCR/CD201 Recombinant Matched Antibody Pair, PBS Only

Catalog Number: **MP01480-1**

## Capture Antibody Information

**Catalog Number:**

84648-3-PBS

**Host:**

Rabbit

**Isotype:**

IgG

**Purification Method:**

Protein A purification

**Clone ID:**

241806D12

**Reactivity:**

human

**GenBank:**

BC014451

**Conjugate:**

Unconjugated

**Full name:**

protein C receptor, endothelial (EPCR)

**Gene ID:**

10544

## Detection Antibody Information

**Catalog Number:**

84648-1-PBS

**Host:**

Rabbit

**Isotype:**

IgG

**Purification Method:**

Protein A purification

**Clone ID:**

241806C6

**Reactivity:**

human

**GenBank:**

BC014451

**Conjugate:**

Unconjugated

**Full name:**

protein C receptor, endothelial (EPCR)

**Gene ID:**

10544

## Applications

**Tested Applications:**

Cytometric bead array, Sandwich ELISA

**Range:**

0.625-40 ng/mL (Cytometric Bead Array)  
19.5-1250 pg/mL (Sandwich ELISA)

**Recommended Dilutions:**

It is recommended that this reagent should be titrated in each testing system to obtain optimal results.

## Product Information

MP01480-1 targets EPCR/CD201 in immunoassays as a matched antibody pair. Validated in Cytometric bead array, Sandwich ELISA.

Capture antibody: EPCR/CD201 Recombinant antibody, PBS Only (Capture) 84648-3-PBS (241806D12). 100 µg. Concentration 1 mg/mL.

Detection antibody: EPCR/CD201 Recombinant antibody, PBS Only (Detector) 84648-1-PBS (241806C6). 100 µg. Concentration 1 mg/mL.

Unconjugated rabbit recombinant monoclonal antibody pair in PBS only storage buffer at a concentration of 1 mg/mL, ready for conjugation. Created using Proteintech's proprietary in-house recombinant technology. Recombinant production enables unrivalled batch-to-batch consistency, easy scale-up, and future security of supply.

Matched antibody pairs are designed for use in a variety of assays and platforms that require matched antibody pairs.

Antibody use should be optimized for each application and assay.

## Storage

**Storage:**

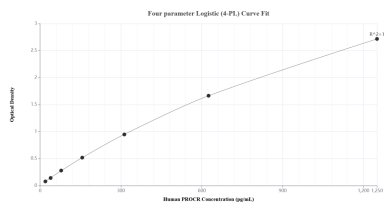
Store at -80°C.

**The product is shipped with ice packs. Upon receipt, store it immediately at -80°C**

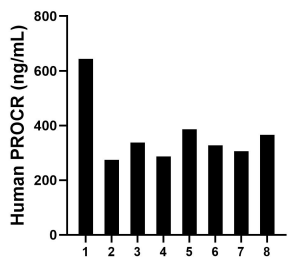
**Storage buffer:**

PBS only

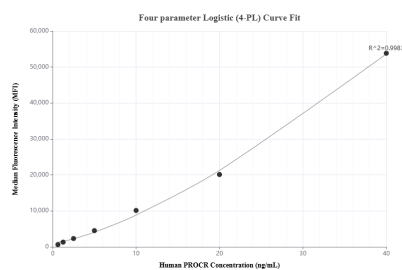
## Selected Validation Data



Sandwich ELISA standard curve of MP01480-1, Human PROCr Recombinant Matched Antibody Pair - PBS only. 84648-3-PBS was coated to a plate as the capture antibody and incubated with serial dilutions of standard Eg2339. 84648-1-PBS was HRP conjugated as the detection antibody. Range: 19.5-1250 pg/mL



Plasma of eight individual healthy human donors was measured. The PROCr concentration of detected samples was determined to be 366.0 ng/mL with a range of 274.3-643.4 ng/mL



Cytometric bead array standard curve of MP01480-1, PROCr Recombinant Matched Antibody Pair, PBS Only. Capture antibody: 84648-3-PBS. Detection antibody: 84648-1-PBS. Standard: Eg2339. Range: 0.625-40 ng/mL