

For Research Use Only

FceR1a Recombinant Matched Antibody Pair, PBS Only



Catalog Number:MP01477-2

Capture Antibody Information

Catalog Number:
84662-6-PBS
Host:
Rabbit
Isotype:
IgG
Purification Method:
Protein A purification

Clone ID:
260244G2
Reactivity:
human
GenBank:
NM_001387280.1
Immunogen Catalog Number:
Eg2022

Conjugate:
Unconjugated
Full name:
Fc fragment of IgE, high affinity I, receptor for; alpha polypeptide
Gene ID:
2205

Detection Antibody Information

Catalog Number:
84662-5-PBS
Host:
Rabbit
Isotype:
IgG
Purification Method:
Protein A purification

Clone ID:
260244E8
Reactivity:
human
GenBank:
NM_001387280.1
Immunogen Catalog Number:
Eg2022

Conjugate:
Unconjugated
Full name:
Fc fragment of IgE, high affinity I, receptor for; alpha polypeptide
Gene ID:
2205

Applications

Tested Applications:
Sandwich ELISA

Range:
0.625-40 ng/mL (Sandwich ELISA)

Recommended Dilutions:
It is recommended that this reagent should be titrated in each testing system to obtain optimal results.

Product Information

MP01477-2 targets FceR1a in immunoassays as a matched antibody pair. Validated in Sandwich ELISA.

Capture antibody: Fc epsilon RI alpha Recombinant monoclonal antibody, PBS Only (Capture) 84662-6-PBS (260244G2). 100 µg. Concentration 1 mg/mL.

Detection antibody: FceR1a Recombinant monoclonal antibody, PBS Only (Detector) 84662-5-PBS (260244E8). 100 µg. Concentration 1 mg/mL.

Unconjugated rabbit recombinant monoclonal antibody pair in PBS only storage buffer at a concentration of 1 mg/mL, ready for conjugation. Created using Proteintech's proprietary in-house recombinant technology. Recombinant production enables unrivalled batch-to-batch consistency, easy scale-up, and future security of supply.

Matched antibody pairs are designed for use in a variety of assays and platforms that require matched antibody pairs.

Antibody use should be optimized for each application and assay.

Storage

Storage:
Store at -80°C.
The product is shipped with ice packs. Upon receipt, store it immediately at -80°C
Storage buffer:
PBS only

For technical support and original validation data for this product please contact:

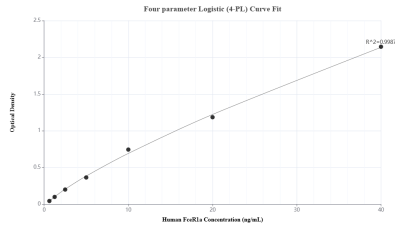
T: 4006900926

E: Proteintech-CN@ptglab.com

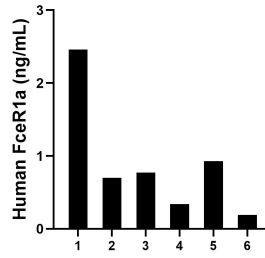
W: ptgcn.com

This product is exclusively available under Proteintech Group brand and is not available to purchase from any other manufacturer.

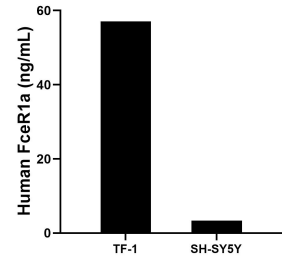
Selected Validation Data



Sandwich ELISA standard curve of MP01477-2, Human FcεR1a Recombinant Matched Antibody Pair - PBS only. 84662-6-PBS was coated to a plate as the capture antibody and incubated with serial dilutions of standard Eg2022. 84662-5-PBS was HRP conjugated as the detection antibody. Range: 0.625-40 ng/mL



Plasma of six individual healthy human donors was measured. The human FcεR1a concentration of detected samples was determined to be 0.90 ng/mL with a range of 0.19 - 2.46 ng/mL



The mean FcεR1a concentration was determined to be 57.10 ng/mL in TF-1 cell extract based on a 4.0 mg/mL extract load and 3.40 ng/mL in SH-SY5Y cell extract based on a 1.2 mg/mL extract load.