

LAIR1 Recombinant Matched Antibody Pair, PBS Only

Catalog Number: **MP01466-1**

Capture Antibody Information

Catalog Number:
84677-1-PBS
Host:
Rabbit
Isotype:
IgG
Purification Method:
Protein A purification

Clone ID:
241805A9
Reactivity:
human
GenBank:
BC027899

Conjugate:
Unconjugated
Full name:
leukocyte-associated immunoglobulin-like receptor 1
Gene ID:
3903

Detection Antibody Information

Catalog Number:
84677-3-PBS
Host:
Rabbit
Isotype:
IgG
Purification Method:
Protein A purification

Clone ID:
241805F10
Reactivity:
human
GenBank:
BC027899

Conjugate:
Unconjugated
Full name:
leukocyte-associated immunoglobulin-like receptor 1
Gene ID:
3903

Applications

Tested Applications:
Cytometric bead array, Sandwich ELISA

Range:
0.469-30 ng/mL (Cytometric Bead Array)
4.88-312.5 pg/mL (Sandwich ELISA)

Recommended Dilutions:
It is recommended that this reagent should be titrated in each testing system to obtain optimal results.

Product Information

MP01466-1 targets LAIR1 in immunoassays as a matched antibody pair. Validated in Cytometric bead array, Sandwich ELISA.

Capture antibody: LAIR1 Recombinant antibody, PBS Only (Capture) 84677-1-PBS (241805A9). 100 µg. Concentration 1 mg/mL.

Detection antibody: LAIR1 Recombinant antibody, PBS Only (Capture/Detector) 84677-3-PBS (241805F10). 100 µg. Concentration 1 mg/mL.

Unconjugated rabbit recombinant monoclonal antibody pair in PBS only storage buffer at a concentration of 1 mg/mL, ready for conjugation. Created using Proteintech's proprietary in-house recombinant technology. Recombinant production enables unrivalled batch-to-batch consistency, easy scale-up, and future security of supply.

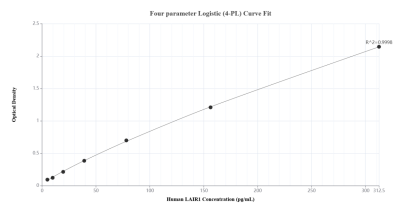
Matched antibody pairs are designed for use in a variety of assays and platforms that require matched antibody pairs.

Antibody use should be optimized for each application and assay.

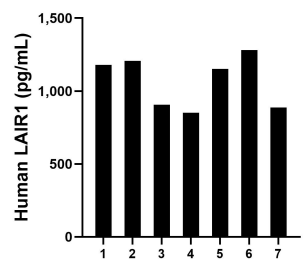
Storage

Storage:
Store at -80°C.
The product is shipped with ice packs. Upon receipt, store it immediately at -80°C
Storage buffer:
PBS only

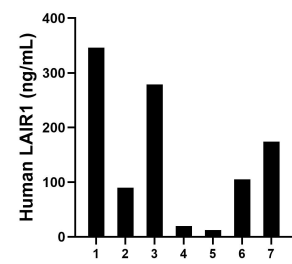
Selected Validation Data



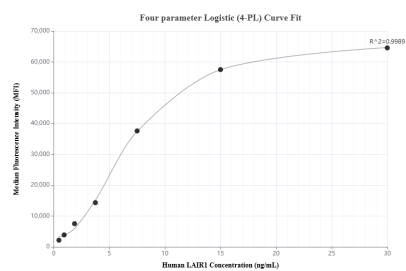
Sandwich ELISA standard curve of MP01466-1, Human LAIR1 Recombinant Matched Antibody Pair - PBS only. 84677-1-PBS was coated to a plate as the capture antibody and incubated with serial dilutions of standard Eg2329. 84677-3-PBS was HRP conjugated as the detection antibody. Range: 4.88-312.5 pg/mL



Serum of seven individual healthy human donors was measured. The LAIR1 concentration of detected samples was determined to be 1,065.9 pg/mL with a range of 851.5-1,280.7 pg/mL.



Urine of seven individual healthy human donors was measured. The LAIR1 concentration of detected samples was determined to be 146.7 ng/mL with a range of 12.5-346.3 ng/mL.



Cytometric bead array standard curve of MP01466-1, LAIR1 Recombinant Matched Antibody Pair, PBS Only. Capture antibody: 84677-1-PBS. Detection antibody: 84677-3-PBS. Standard: Eg2329. Range: 0.469-30 ng/mL