

CD300a Recombinant Matched Antibody Pair, PBS Only

Catalog Number: **MP01465-2**

Capture Antibody Information

Catalog Number:
84674-1-PBS
Host:
Rabbit
Isotype:
IgG
Purification Method:
Protein A purification

Clone ID:
242131F4
Reactivity:
human
GenBank:
NM_007261.4

Conjugate:
Unconjugated
Full name:
CD300a molecule
Gene ID:
11314

Detection Antibody Information

Catalog Number:
84674-3-PBS
Host:
Rabbit
Isotype:
IgG
Purification Method:
Protein A purification

Clone ID:
242131A5
Reactivity:
human
GenBank:
NM_007261.4

Conjugate:
Unconjugated
Full name:
CD300a molecule
Gene ID:
11314

Applications

Tested Applications:
Sandwich ELISA

Range:
31.25-2000 pg/mL (Sandwich ELISA)

Recommended Dilutions:
It is recommended that this reagent should be titrated in each testing system to obtain optimal results.

Product Information

MP01465-2 targets CD300a in immunoassays as a matched antibody pair. Validated in Sandwich ELISA.

Capture antibody: CD300a Recombinant antibody, PBS Only (Capture/Detector) 84674-1-PBS (242131F4). 100 µg. Concentration 1 mg/mL.

Detection antibody: CD300a Recombinant antibody, PBS Only (Detector) 84674-3-PBS (242131A5). 100 µg. Concentration 1 mg/mL.

Unconjugated rabbit recombinant monoclonal antibody pair in PBS only storage buffer at a concentration of 1 mg/mL, ready for conjugation. Created using Proteintech's proprietary in-house recombinant technology. Recombinant production enables unrivalled batch-to-batch consistency, easy scale-up, and future security of supply.

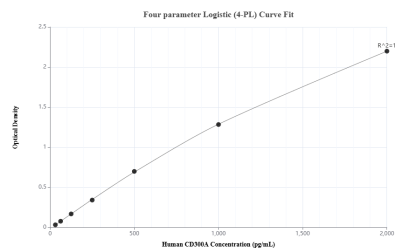
Matched antibody pairs are designed for use in a variety of assays and platforms that require matched antibody pairs.

Antibody use should be optimized for each application and assay.

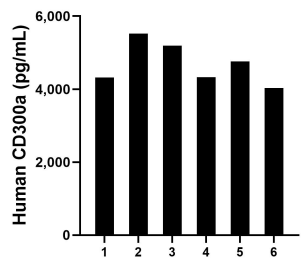
Storage

Storage:
Store at -80°C.
The product is shipped with ice packs. Upon receipt, store it immediately at -80°C
Storage buffer:
PBS only

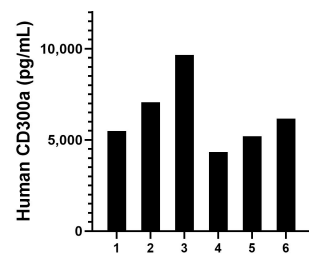
Selected Validation Data



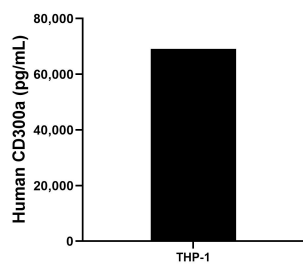
Sandwich ELISA standard curve of MP01465-2, Human CD300a Recombinant Matched Antibody Pair - PBS only. 84674-1-PBS was coated to a plate as the capture antibody and incubated with serial dilutions of standard Eg2652. 84674-3-PBS was HRP conjugated as the detection antibody. Range: 31.25-2000 pg/mL



Serum of six individual healthy human donors was measured. The human CD300a concentration of detected samples was determined to be 4,632.3 pg/mL with a range of 4,032.2 - 5,523.5 pg/mL.



Plasma of six individual healthy human donors was measured. The human CD300a concentration of detected samples was determined to be 6,315.1 pg/mL with a range of 4,330.2 - 9,560.6 pg/mL.



The mean CD300a concentration was determined to be 69,064.8 pg/mL in THP-1 cell extract based on a 4.4 mg/mL extract load.