

PTBP2 Recombinant Matched Antibody Pair, PBS Only

Catalog Number: **MP01460-1**

Capture Antibody Information

Catalog Number:
84300-2-PBS
Host:
Rabbit
Isotype:
IgG
Purification Method:
Protein A purification

Clone ID:
241286E6
Reactivity:
human
GenBank:
NM_021190

Conjugate:
Unconjugated
Full name:
polypyrimidine tract binding protein 2
Gene ID:
58155

Detection Antibody Information

Catalog Number:
84300-3-PBS
Host:
Rabbit
Isotype:
IgG
Purification Method:
Protein A purification

Clone ID:
241286E4
Reactivity:
human
GenBank:
NM_021190

Conjugate:
Unconjugated
Full name:
polypyrimidine tract binding protein 2
Gene ID:
58155

Applications

Tested Applications:
Sandwich ELISA

Range:
1.56-100 pg/mL (Sandwich ELISA)

Recommended Dilutions:
It is recommended that this reagent should be titrated in each testing system to obtain optimal results.

Product Information

MP01460-1 targets PTBP2 in immunoassays as a matched antibody pair. Validated in Sandwich ELISA.

Capture antibody: PTBP2 Recombinant antibody, PBS Only (Capture) 84300-2-PBS (241286E6). 100 µg. Concentration 1 mg/mL.

Detection antibody: PTBP2 Recombinant antibody, PBS Only (Detector) 84300-3-PBS (241286E4). 100 µg. Concentration 1 mg/mL.

Unconjugated rabbit recombinant monoclonal antibody pair in PBS only storage buffer at a concentration of 1 mg/mL, ready for conjugation. Created using Proteintech's proprietary in-house recombinant technology. Recombinant production enables unrivalled batch-to-batch consistency, easy scale-up, and future security of supply.

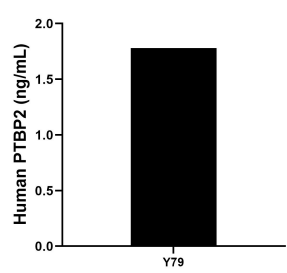
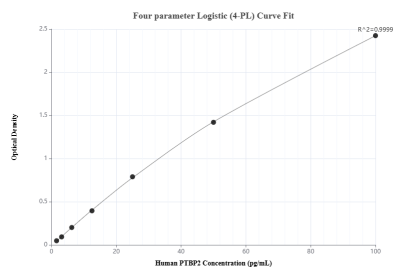
Matched antibody pairs are designed for use in a variety of assays and platforms that require matched antibody pairs.

Antibody use should be optimized for each application and assay.

Storage

Storage:
Store at -80°C.
The product is shipped with ice packs. Upon receipt, store it immediately at -80°C
Storage buffer:
PBS only

Selected Validation Data



Sandwich ELISA standard curve of MP01460-1, Human PTBP2 Recombinant Matched Antibody Pair - PBS only. 84300-2-PBS was coated to a plate as the capture antibody and incubated with serial dilutions of standard SY01240. 84300-3-PBS was HRP conjugated as the detection antibody. Range: 1.56-100 pg/mL

The mean PTBP2 concentration was determined to be 1.78 ng/mL in Y79 cell extract based on a 1.3 mg/mL extract load.