

# PON3 Recombinant Matched Antibody Pair, PBS Only

Catalog Number: **MP01459-2**

## Capture Antibody Information

**Catalog Number:**  
84604-1-PBS  
**Host:**  
Rabbit  
**Isotype:**  
IgG  
**Purification Method:**  
Protein A purification

**Clone ID:**  
242035D3  
**Reactivity:**  
human  
**GenBank:**  
NM\_000940.2  
**Immunogen Catalog Number:**  
Ag36602

**Conjugate:**  
Unconjugated  
**Full name:**  
paraoxonase 3  
**Gene ID:**  
5446

## Detection Antibody Information

**Catalog Number:**  
84604-3-PBS  
**Host:**  
Rabbit  
**Isotype:**  
IgG  
**Purification Method:**  
Protein A purification

**Clone ID:**  
242035G12  
**Reactivity:**  
human  
**GenBank:**  
NM\_000940.2  
**Immunogen Catalog Number:**  
Ag36602

**Conjugate:**  
Unconjugated  
**Full name:**  
paraoxonase 3  
**Gene ID:**  
5446

## Applications

**Tested Applications:**  
Cytometric bead array, Sandwich ELISA

**Range:**  
0.625-80 ng/mL (Cytometric Bead Array)  
78.1-5000 pg/mL (Sandwich ELISA)

**Recommended Dilutions:**  
It is recommended that this reagent should be titrated in each testing system to obtain optimal results.

## Product Information

MP01459-2 targets PON3 in immunoassays as a matched antibody pair. Validated in Cytometric bead array, Sandwich ELISA.

Capture antibody: PON3 Recombinant antibody, PBS Only (Capture) 84604-1-PBS (242035D3). 100 µg. Concentration 1 mg/mL.

Detection antibody: PON3 Recombinant antibody, PBS Only (Detector) 84604-3-PBS (242035G12). 100 µg. Concentration 1 mg/mL.

Alternative PON3 matched antibody pairs: MP01459-1

Unconjugated rabbit recombinant monoclonal antibody pair in PBS only storage buffer at a concentration of 1 mg/mL, ready for conjugation. Created using Proteintech's proprietary in-house recombinant technology. Recombinant production enables unrivalled batch-to-batch consistency, easy scale-up, and future security of supply.

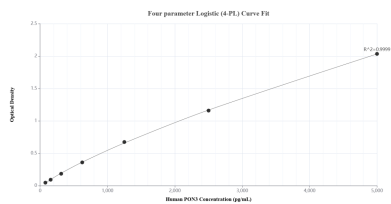
Matched antibody pairs are designed for use in a variety of assays and platforms that require matched antibody pairs.

Antibody use should be optimized for each application and assay.

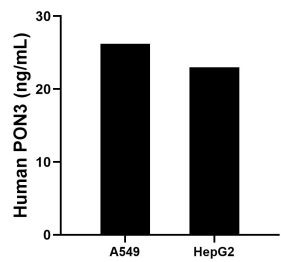
## Storage

**Storage:**  
Store at -80°C.  
**The product is shipped with ice packs. Upon receipt, store it immediately at -80°C**  
**Storage buffer:**  
PBS only

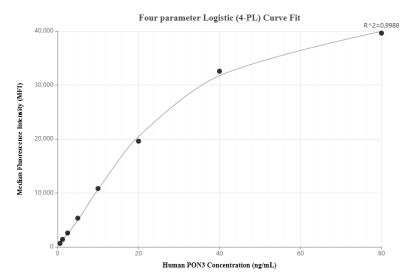
## Selected Validation Data



Sandwich ELISA standard curve of MP01459-2, Human PON3 Recombinant Matched Antibody Pair - PBS only. 84604-1-PBS was coated to a plate as the capture antibody and incubated with serial dilutions of standard Ag36602. 84604-3-PBS was HRP conjugated as the detection antibody. Range: 78.1-5000 pg/mL.



The mean PON3 concentration was determined to be 26.2 ng/mL in A549 cell extract based on a 1.5 mg/mL extract load and 23.0 ng/mL in HepG2 cell extract based on a 3.3 mg/mL extract load.



Cytometric bead array standard curve of MP01459-2, PON3 Recombinant Matched Antibody Pair, PBS Only. Capture antibody: 84604-1-PBS. Detection antibody: 84604-3-PBS. Standard: Ag36602. Range: 0.625-80 ng/mL.