

# KIM-1/HAVCR1 Recombinant Matched Antibody Pair, PBS Only

Catalog Number: **MP01449-1**

## Capture Antibody Information

**Catalog Number:**

84600-1-PBS

**Host:**

Rabbit

**Isotype:**

IgG

**Purification Method:**

Protein A purification

**Clone ID:**

242001A2

**Reactivity:**

human

**GenBank:**

NM\_001173393.3

**Conjugate:**

Unconjugated

**Full name:**

hepatitis A virus cellular receptor 1

**Gene ID:**

26762

## Detection Antibody Information

**Catalog Number:**

84600-2-PBS

**Host:**

Rabbit

**Isotype:**

IgG

**Purification Method:**

Protein A purification

**Clone ID:**

242001E8

**Reactivity:**

human

**GenBank:**

NM\_001173393.3

**Conjugate:**

Unconjugated

**Full name:**

hepatitis A virus cellular receptor 1

**Gene ID:**

26762

## Applications

**Tested Applications:**

Cytometric bead array, Sandwich ELISA

**Range:**

0.625-80 ng/mL (Cytometric Bead Array)  
9.77-625 pg/mL (Sandwich ELISA)

**Recommended Dilutions:**

It is recommended that this reagent should be titrated in each testing system to obtain optimal results.

## Product Information

MP01449-1 targets KIM-1/HAVCR1 in immunoassays as a matched antibody pair. Validated in Cytometric bead array, Sandwich ELISA.

Capture antibody: TIM-1/KIM-1/HAVCR Recombinant antibody, PBS Only (Capture) 84600-1-PBS (242001A2). 100 µg. Concentration 1 mg/mL.

Detection antibody: TIM-1/KIM-1/HAVCR Recombinant antibody, PBS Only (Detector) 84600-2-PBS (242001E8). 100 µg. Concentration 1 mg/mL.

Unconjugated rabbit recombinant monoclonal antibody pair in PBS only storage buffer at a concentration of 1 mg/mL, ready for conjugation. Created using Proteintech's proprietary in-house recombinant technology. Recombinant production enables unrivalled batch-to-batch consistency, easy scale-up, and future security of supply.

Matched antibody pairs are designed for use in a variety of assays and platforms that require matched antibody pairs.

Antibody use should be optimized for each application and assay.

## Storage

**Storage:**

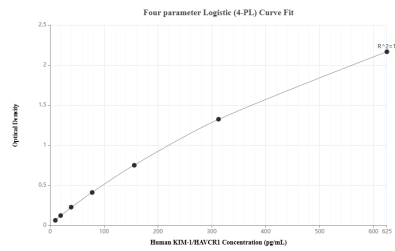
Store at -80°C.

**The product is shipped with ice packs. Upon receipt, store it immediately at -80°C**

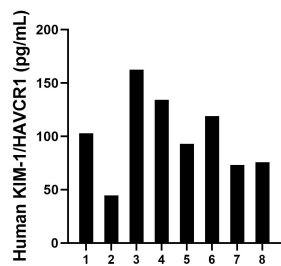
**Storage buffer:**

PBS only

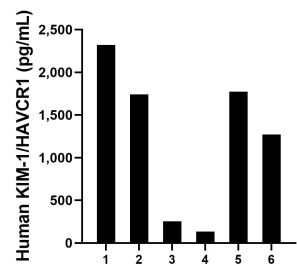
Selected Validation Data



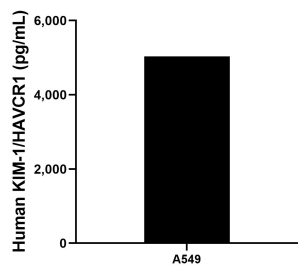
Sandwich ELISA standard curve of MP01449-1, Human KIM-1/HAVCR1 Recombinant Matched Antibody Pair - PBS only. 84600-1-PBS was coated to a plate as the capture antibody and incubated with serial dilutions of standard Eg1442. 84600-2-PBS was HRP conjugated as the detection antibody. Range: 9.77-625 pg/mL



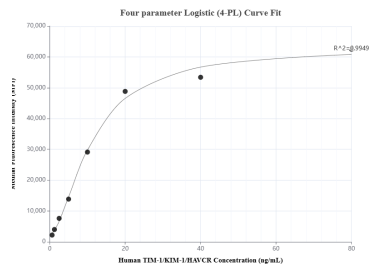
Serum of eight individual healthy human donors was measured. The human KIM-1/HAVCR1 concentration of detected samples was determined to be 100.6 pg/mL with a range of 44.6-162.5 pg/mL



Urine of six individual healthy human donors was measured. The human KIM-1/HAVCR1 concentration of detected samples was determined to be 1,248.6 pg/mL with a range of 134.3-2,318.7 pg/mL



A549 were cultured in DMEM supplemented with 10% fetal bovine serum, 2.5 mM L-glutamine, 100 U/mL penicillin, and 100  $\mu$ g/mL streptomycin sulfate. An aliquot of the cell culture supernate was removed, assayed for human KIM-1/HAVCR1, and measured 5,031.4 pg/mL



Cytometric bead array standard curve of MP01449-1, KIM-1/HAVCR1 Recombinant Matched Antibody Pair, PBS Only. Capture antibody: 84600-1-PBS. Detection antibody: 84600-2-PBS. Standard: Eg1442. Range: 0.625-80 ng/mL