

# INTS6 Recombinant Matched Antibody Pair, PBS Only

Catalog Number: **MP01446-1**

## Capture Antibody Information

<b>Catalog Number:</b> 84610-3-PBS	<b>Clone ID:</b> 242099E6	<b>Conjugate:</b> Unconjugated
<b>Host:</b> Rabbit	<b>Reactivity:</b> human, mouse	<b>Full name:</b> integrator complex subunit 6
<b>Isotype:</b> IgG	<b>GenBank:</b> BC039829	<b>Gene ID:</b> 26512
<b>Purification Method:</b> Protein A purification	<b>Immunogen Catalog Number:</b> Ag36146	

## Detection Antibody Information

<b>Catalog Number:</b> 84610-1-PBS	<b>Clone ID:</b> 242099C7	<b>Conjugate:</b> Unconjugated
<b>Host:</b> Rabbit	<b>Reactivity:</b> human	<b>Full name:</b> integrator complex subunit 6
<b>Isotype:</b> IgG	<b>GenBank:</b> BC039829	<b>Gene ID:</b> 26512
<b>Purification Method:</b> Protein A purification	<b>Immunogen Catalog Number:</b> Ag36146	

## Applications

<b>Tested Applications:</b> Cytometric bead array, Sandwich ELISA	<b>Range:</b> 0.313-40 ng/mL (Cytometric Bead Array) 0.156-10 ng/mL (Sandwich ELISA)	<b>Recommended Dilutions:</b> It is recommended that this reagent should be titrated in each testing system to obtain optimal results.
----------------------------------------------------------------------	--------------------------------------------------------------------------------------------	-------------------------------------------------------------------------------------------------------------------------------------------

## Product Information

MP01446-1 targets INTS6 in immunoassays as a matched antibody pair. Validated in Cytometric bead array, Sandwich ELISA.

Capture antibody: INTS6 Recombinant antibody, PBS Only (Capture) 84610-3-PBS (242099E6). 100 µg. Concentration 1 mg/mL.

Detection antibody: INTS6 Recombinant antibody, PBS Only (Detector) 84610-1-PBS (242099C7). 100 µg. Concentration 1 mg/mL.

Unconjugated rabbit recombinant monoclonal antibody pair in PBS only storage buffer at a concentration of 1 mg/mL, ready for conjugation. Created using Proteintech's proprietary in-house recombinant technology. Recombinant production enables unrivalled batch-to-batch consistency, easy scale-up, and future security of supply.

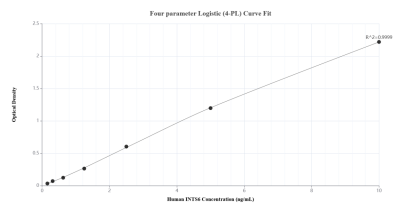
Matched antibody pairs are designed for use in a variety of assays and platforms that require matched antibody pairs.

Antibody use should be optimized for each application and assay.

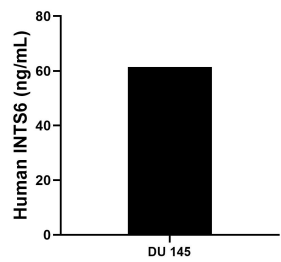
## Storage

**Storage:**  
Store at -80°C.  
**The product is shipped with ice packs. Upon receipt, store it immediately at -80°C**  
**Storage buffer:**  
PBS only

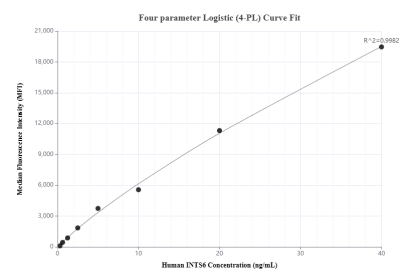
# Selected Validation Data



Sandwich ELISA standard curve of MP01446-1, Human INTS6 Recombinant Matched Antibody Pair - PBS only. 84610-3-PBS was coated to a plate as the capture antibody and incubated with serial dilutions of standard Ag36146. 84610-1-PBS was HRP conjugated as the detection antibody. Range: 0.156-10 ng/mL



The mean INTS6 concentration was determined to be 61.44 ng/mL in DU 145 cell extract based on a 1.00 mg/mL extract load.



Cytometric bead array standard curve of MP01446-1, INTS6 Recombinant Matched Antibody Pair, PBS Only. Capture antibody: 84610-3-PBS. Detection antibody: 84610-1-PBS. Standard: Ag36146. Range: 0.313-40 ng/mL