

CD164 Recombinant Matched Antibody Pair, PBS Only

Catalog Number: **MP01444-3**

Capture Antibody Information

Catalog Number:
84598-6-PBS
Host:
Rabbit
Isotype:
IgG
Purification Method:
Protein A purification

Clone ID:
241951C3
Reactivity:
human
GenBank:
NM_006016.6

Conjugate:
Unconjugated
Full name:
CD164 molecule, sialomucin
Gene ID:
8763

Detection Antibody Information

Catalog Number:
84598-5-PBS
Host:
Rabbit
Isotype:
IgG
Purification Method:
Protein A purification

Clone ID:
241950F1
Reactivity:
human
GenBank:
NM_006016.6

Conjugate:
Unconjugated
Full name:
CD164 molecule, sialomucin
Gene ID:
8763

Applications

Tested Applications:
Sandwich ELISA

Range:
0.156-10 ng/mL (Sandwich ELISA)

Recommended Dilutions:
It is recommended that this reagent should be titrated in each testing system to obtain optimal results.

Product Information

MP01444-3 targets CD164 in immunoassays as a matched antibody pair. Validated in Sandwich ELISA.

Capture antibody: CD164 Recombinant antibody, PBS Only (Capture) 84598-6-PBS (241951C3). 100 µg. Concentration 1 mg/mL.

Detection antibody: CD164 Recombinant antibody, PBS Only (Detector) 84598-5-PBS (241950F1). 100 µg. Concentration 1 mg/mL.

Unconjugated rabbit recombinant monoclonal antibody pair in PBS only storage buffer at a concentration of 1 mg/mL, ready for conjugation. Created using Proteintech's proprietary in-house recombinant technology. Recombinant production enables unrivalled batch-to-batch consistency, easy scale-up, and future security of supply.

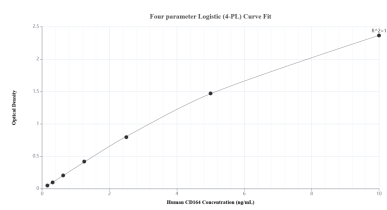
Matched antibody pairs are designed for use in a variety of assays and platforms that require matched antibody pairs.

Antibody use should be optimized for each application and assay.

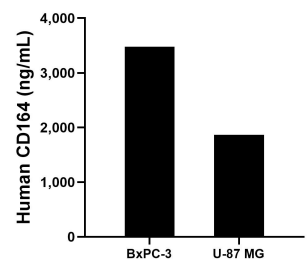
Storage

Storage:
Store at -80°C.
The product is shipped with ice packs. Upon receipt, store it immediately at -80°C
Storage buffer:
PBS only

Selected Validation Data



Sandwich ELISA standard curve of MP01444-3, Human CD164 Recombinant Matched Antibody Pair - PBS only. 84598-6-PBS was coated to a plate as the capture antibody and incubated with serial dilutions of standard Eg1690. 84598-5-PBS was HRP conjugated as the detection antibody. Range: 0.156-10 ng/mL



The mean CD164 concentration was determined to be 3,475.14 ng/mL in BxPC-3 cell extract based on a 5.40 mg/mL extract load and 1,866.96 ng/mL in U-87 MG cell extract based on a 1.00 mg/mL extract load.