

# Cortactin Recombinant Matched Antibody Pair, PBS Only

Catalog Number: **MP01412-2**

## Capture Antibody Information

Catalog Number: 84569-2-PBS	Clone ID: 241987B4	Conjugate: Unconjugated
Host: Rabbit	Reactivity: human	Full name: cortactin
Isotype: IgG	GenBank: BC008799	Gene ID: 2017
Purification Method: Protein A purification	Immunogen Catalog Number: Ag1940	

## Detection Antibody Information

Catalog Number: 84569-1-PBS	Clone ID: 241987A12	Conjugate: Unconjugated
Host: Rabbit	Reactivity: human	Full name: cortactin
Isotype: IgG	GenBank: BC008799	Gene ID: 2017
Purification Method: Protein A purification	Immunogen Catalog Number: Ag1940	

## Applications

Tested Applications: Cytometric bead array, Sandwich ELISA	Range: 0.313-40 ng/mL (Cytometric Bead Array) 78.1-5000 pg/mL (Sandwich ELISA)	Recommended Dilutions: It is recommended that this reagent should be titrated in each testing system to obtain optimal results.
---	--	--

## Product Information

MP01412-2 targets Cortactin in immunoassays as a matched antibody pair. Validated in Cytometric bead array, Sandwich ELISA.

Capture antibody: Cortactin Recombinant antibody, PBS Only (Capture) 84569-2-PBS (241987B4). 100 µg. Concentration 1 mg/mL.

Detection antibody: Cortactin Recombinant antibody, PBS Only (Detector) 84569-1-PBS (241987A12). 100 µg. Concentration 1 mg/mL.

Unconjugated rabbit recombinant monoclonal antibody pair in PBS only storage buffer at a concentration of 1 mg/mL, ready for conjugation. Created using Proteintech's proprietary in-house recombinant technology. Recombinant production enables unrivalled batch-to-batch consistency, easy scale-up, and future security of supply.

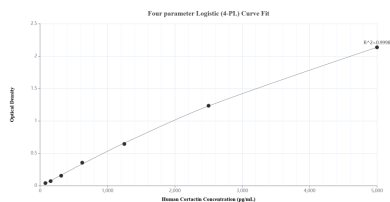
Matched antibody pairs are designed for use in a variety of assays and platforms that require matched antibody pairs.

Antibody use should be optimized for each application and assay.

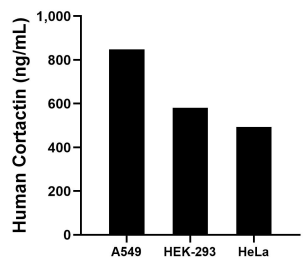
## Storage

Storage:  
Store at -80°C.  
**The product is shipped with ice packs. Upon receipt, store it immediately at -80°C**  
Storage buffer:  
PBS only

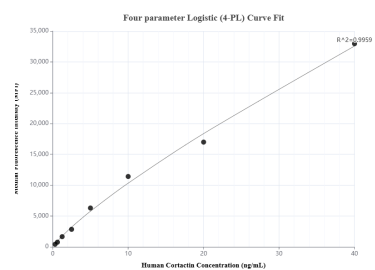
## Selected Validation Data



Sandwich ELISA standard curve of MP01412-2, Human Cortactin Recombinant Matched Antibody Pair - PBS only. 84569-2-PBS was coated to a plate as the capture antibody and incubated with serial dilutions of standard Ag1940. 84569-1-PBS was HRP conjugated as the detection antibody. Range: 78.1-5000 pg/mL.



The mean Cortactin concentration was determined to be 848.3 ng/mL in A549 cell extract based on a 2.3 mg/mL extract load, 581.1 ng/mL in HEK-293 cell extract based on a 3.3 mg/mL extract load and 493.0 ng/mL in HeLa cell extract based on a 1.0 mg/mL extract load.



Cytometric bead array standard curve of MP01412-2, Cortactin Recombinant Matched Antibody Pair, PBS Only. Capture antibody: 84569-2-PBS. Detection antibody: 84569-1-PBS. Standard: Ag1940. Range: 0.313-40 ng/mL.