

ER Recombinant Matched Antibody Pair, PBS Only

Catalog Number: **MP01406-2**

Capture Antibody Information

Catalog Number: 84564-12-PBS	Clone ID: 250324G6	Conjugate: Unconjugated
Host: Rabbit	Reactivity: human	Full name: estrogen receptor 1
Isotype: IgG	GenBank: BC128573	Gene ID: 2099
Purification Method: Protein A purification	Immunogen Catalog Number: Eg2234	

Detection Antibody Information

Catalog Number: 84564-8-PBS	Clone ID: 250324G1	Conjugate: Unconjugated
Host: Rabbit	Reactivity: human	Full name: estrogen receptor 1
Isotype: IgG	GenBank: BC128573	Gene ID: 2099
Purification Method: Protein A purification	Immunogen Catalog Number: Eg2234	

Applications

Tested Applications: Sandwich ELISA	Range: 19.5-1250 pg/mL (Sandwich ELISA)	Recommended Dilutions: It is recommended that this reagent should be titrated in each testing system to obtain optimal results.
--	--	--

Product Information

MP01406-2 targets ER in immunoassays as a matched antibody pair. Validated in Sandwich ELISA.

Capture antibody: ER Recombinant antibody, PBS Only (Capture) 84564-12-PBS (250324G6). 100 µg. Concentration 1 mg/mL.

Detection antibody: ER Recombinant antibody, PBS Only (Detector) 84564-8-PBS (250324G1). 100 µg. Concentration 1 mg/mL.

Unconjugated rabbit recombinant monoclonal antibody pair in PBS only storage buffer at a concentration of 1 mg/mL, ready for conjugation. Created using Proteintech's proprietary in-house recombinant technology. Recombinant production enables unrivalled batch-to-batch consistency, easy scale-up, and future security of supply.

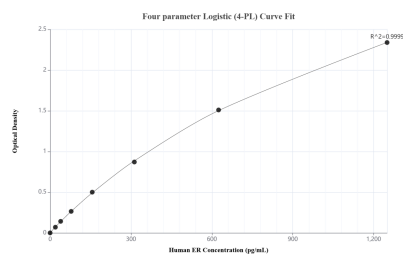
Matched antibody pairs are designed for use in a variety of assays and platforms that require matched antibody pairs.

Antibody use should be optimized for each application and assay.

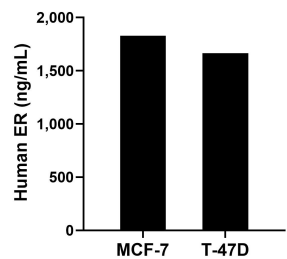
Storage

Storage:
Store at -80°C.
The product is shipped with ice packs. Upon receipt, store it immediately at -80°C
Storage buffer:
PBS only

Selected Validation Data



Sandwich ELISA standard curve of MP01406-2, Human ER Recombinant Matched Antibody Pair - PBS only. 84564-12-PBS was coated to a plate as the capture antibody and incubated with serial dilutions of standard Eg2234. 84564-8-PBS was HRP conjugated as the detection antibody. Range: 19.5-1250 pg/mL



The mean ER concentration was determined to be 1,828.0 pg/mL in MCF-7 cell extract based on a 1.3 mg/mL extract load and 1,662.9 pg/mL in T-47D cell extract based on a 1.2 mg/mL extract load.