

# IL-1RA Recombinant Matched Antibody Pair, PBS Only

Catalog Number: **MP01389-3**

## Capture Antibody Information

<b>Catalog Number:</b> 84532-5-PBS	<b>Clone ID:</b> 241879G2	<b>Conjugate:</b> Unconjugated
<b>Host:</b> Rabbit	<b>Reactivity:</b> human	<b>Full name:</b> interleukin 1 receptor antagonist
<b>Isotype:</b> IgG	<b>GenBank:</b> BC009745	<b>Gene ID:</b> 3557
<b>Purification Method:</b> Protein A purification	<b>Immunogen Catalog Number:</b> Ag1277	

## Detection Antibody Information

<b>Catalog Number:</b> 84532-3-PBS	<b>Clone ID:</b> 241879G8	<b>Conjugate:</b> Unconjugated
<b>Host:</b> Rabbit	<b>Reactivity:</b> human	<b>Full name:</b> interleukin 1 receptor antagonist
<b>Isotype:</b> IgG	<b>GenBank:</b> BC009745	<b>Gene ID:</b> 3557
<b>Purification Method:</b> Protein A purification	<b>Immunogen Catalog Number:</b> Ag1277	

## Applications

<b>Tested Applications:</b> Sandwich ELISA	<b>Range:</b> 78.1-5000 pg/mL (Sandwich ELISA)	<b>Recommended Dilutions:</b> It is recommended that this reagent should be titrated in each testing system to obtain optimal results.
---	---	---

## Product Information

MP01389-3 targets IL-1RA in immunoassays as a matched antibody pair. Validated in Sandwich ELISA.

Capture antibody: IL-1RA Recombinant antibody, PBS Only (Capture) 84532-5-PBS (241879G2). 100 µg. Concentration 1 mg/mL.

Detection antibody: IL-1RA Recombinant antibody, PBS Only (Capture/Detector) 84532-3-PBS (241879G8). 100 µg. Concentration 1 mg/mL.

Unconjugated rabbit recombinant monoclonal antibody pair in PBS only storage buffer at a concentration of 1 mg/mL, ready for conjugation. Created using Proteintech's proprietary in-house recombinant technology. Recombinant production enables unrivalled batch-to-batch consistency, easy scale-up, and future security of supply.

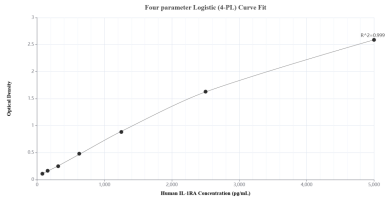
Matched antibody pairs are designed for use in a variety of assays and platforms that require matched antibody pairs.

Antibody use should be optimized for each application and assay.

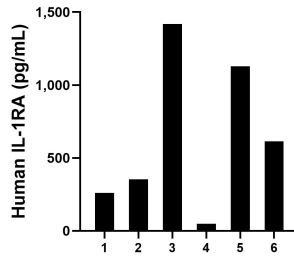
## Storage

**Storage:**  
Store at -80°C.  
**The product is shipped with ice packs. Upon receipt, store it immediately at -80°C**  
**Storage buffer:**  
PBS only

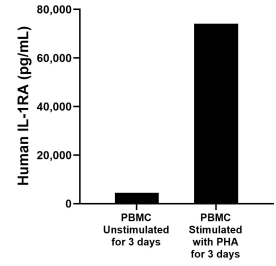
## Selected Validation Data



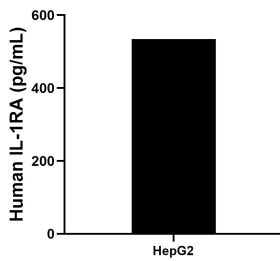
Sandwich ELISA standard curve of MP01389-3, Human IL-1RA Recombinant Matched Antibody Pair - PBS only. 84532-5-PBS was coated to a plate as the capture antibody and incubated with serial dilutions of standard Ag1277. 84532-3-PBS was HRP conjugated as the detection antibody. Range: 78.1-5000 pg/mL.



Serum of six individual healthy human donors was measured. The IL-1RA concentration of detected samples was determined to be 637.3 pg/mL with a range of 49.7-1,417.8 pg/mL.



Human peripheral blood mononuclear cells (PBMC) were cultured unstimulated or stimulated with 10  $\mu$ g/mL PHA for 3 days. The mean IL-1RA concentration was determined to be 4,505.9 pg/mL in unstimulated PBMC supernatant, 74,132.2 pg/mL in PHA stimulated PBMC supernatant.



HepG2 cells were cultured in DMEM supplemented with 10% fetal bovine serum, 2.5 mM L-glutamine, 100 U/mL penicillin, and 100 µg/mL streptomycin sulfate. An aliquot of the cell culture supernate was removed, assayed for human IL-1RA, and measured 534.4 pg/mL.