

Rat CD4 Recombinant Matched Antibody Pair, PBS Only

Catalog Number: **MP01387-3**

Capture Antibody Information

Catalog Number:
84530-4-PBS
Host:
Rabbit
Isotype:
IgG
Purification Method:
Protein A purification

Clone ID:
241955F6
Reactivity:
rat
GenBank:
NM_012705.1
Immunogen Catalog Number:
Eg2025

Conjugate:
Unconjugated
Full name:
Cd4 molecule
Gene ID:
24932

Detection Antibody Information

Catalog Number:
84530-1-PBS
Host:
Rabbit
Isotype:
IgG
Purification Method:
Protein A purification

Clone ID:
241955C8
Reactivity:
rat
GenBank:
NM_012705.1
Immunogen Catalog Number:
Eg2025

Conjugate:
Unconjugated
Full name:
Cd4 molecule
Gene ID:
24932

Applications

Tested Applications:
Sandwich ELISA

Range:
39.1-2500 pg/mL (Sandwich ELISA)

Recommended Dilutions:
It is recommended that this reagent should be titrated in each testing system to obtain optimal results.

Product Information

MP01387-3 targets CD4 in immunoassays as a matched antibody pair. Validated in Sandwich ELISA.

Capture antibody: Rat CD4 Recombinant antibody, PBS Only (Capture) 84530-4-PBS (241955F6). 100 µg. Concentration 1 mg/mL.

Detection antibody: Rat CD4 Recombinant antibody, PBS Only (Detector) 84530-1-PBS (241955C8). 100 µg. Concentration 1 mg/mL.

Unconjugated rabbit recombinant monoclonal antibody pair in PBS only storage buffer at a concentration of 1 mg/mL, ready for conjugation. Created using Proteintech's proprietary in-house recombinant technology. Recombinant production enables unrivalled batch-to-batch consistency, easy scale-up, and future security of supply.

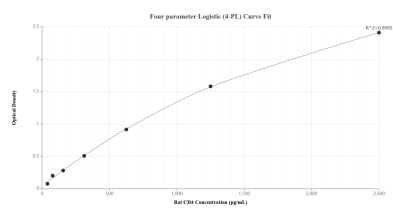
Matched antibody pairs are designed for use in a variety of assays and platforms that require matched antibody pairs.

Antibody use should be optimized for each application and assay.

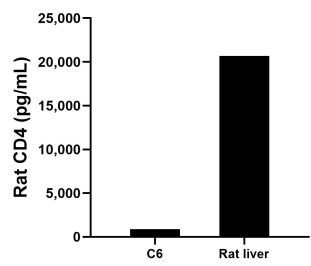
Storage

Storage:
Store at -80°C.
The product is shipped with ice packs. Upon receipt, store it immediately at -80°C
Storage buffer:
PBS only

Selected Validation Data



Sandwich ELISA standard curve of MP01387-3, Rat CD4 Recombinant Matched Antibody Pair - PBS only. 84530-4-PBS was coated to a plate as the capture antibody and incubated with serial dilutions of standard Eg2025. 84530-1-PBS was HRP conjugated as the detection antibody. Range: 39.1-2500 pg/mL.



The mean CD4 concentration was determined to be 874.9 pg/mL in C6 cell extract based on a 2.0 mg/mL extract load and 20,690.7 pg/mL in rat liver tissue extract based on a 2.9 mg/mL extract load.