

LYVE-1 Recombinant Matched Antibody Pair, PBS Only

Catalog Number: **MP01383-1**

Capture Antibody Information

Catalog Number:
84526-3-PBS

Host:
Rabbit

Isotype:
IgG

Purification Method:
Protein A purification

Clone ID:
241795F7

Reactivity:
human

GenBank:
NM_006691.4

Conjugate:
Unconjugated

Full name:
lymphatic vessel endothelial
hyaluronan receptor 1

Gene ID:
10894

Detection Antibody Information

Catalog Number:
84526-2-PBS

Host:
Rabbit

Isotype:
IgG

Purification Method:
Protein A purification

Clone ID:
241795D1

Reactivity:
human

GenBank:
NM_006691.4

Conjugate:
Unconjugated

Full name:
lymphatic vessel endothelial
hyaluronan receptor 1

Gene ID:
10894

Applications

Tested Applications:
Cytometric bead array, Sandwich
ELISA

Range:
0.469-60 ng/mL (Cytometric Bead
Array)
39.1-2500 pg/mL (Sandwich ELISA)

Recommended Dilutions:
It is recommended that this reagent
should be titrated in each testing
system to obtain optimal results.

Product Information

MP01383-1 targets LYVE-1 in immunoassays as a matched antibody pair. Validated in Cytometric bead array, Sandwich ELISA.

Capture antibody: LYVE-1 Recombinant antibody, PBS Only (Capture) 84526-3-PBS (241795F7). 100 µg. Concentration 1 mg/mL.

Detection antibody: LYVE-1 Recombinant antibody, PBS Only (Detector) 84526-2-PBS (241795D1). 100 µg. Concentration 1 mg/mL.

Unconjugated rabbit recombinant monoclonal antibody pair in PBS only storage buffer at a concentration of 1 mg/mL, ready for conjugation. Created using Proteintech's proprietary in-house recombinant technology. Recombinant production enables unrivalled batch-to-batch consistency, easy scale-up, and future security of supply.

Matched antibody pairs are designed for use in a variety of assays and platforms that require matched antibody pairs.

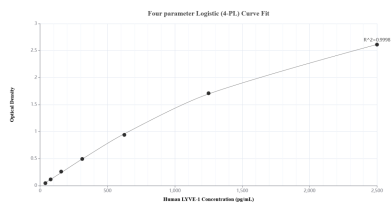
Antibody use should be optimized for each application and assay.

Storage

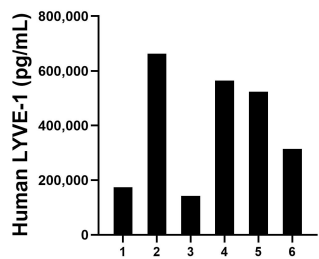
Storage:
Store at -80°C.
The product is shipped with ice packs. Upon receipt, store it immediately at -80°C

Storage buffer:
PBS only

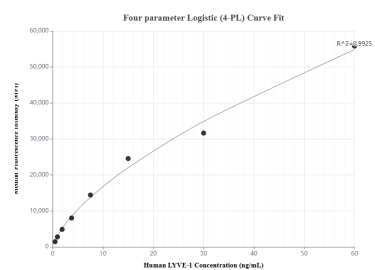
Selected Validation Data



Sandwich ELISA standard curve of MP01383-1, Human LYVE-1 Recombinant Matched Antibody Pair - PBS only. 84526-3-PBS was coated to a plate as the capture antibody and incubated with serial dilutions of standard Eg1615. 84526-2-PBS was HRP conjugated as the detection antibody. Range: 39.1-2500 pg/mL



Serum of six individual healthy human donors was measured. The LYVE-1 concentration of detected samples was determined to be 396,843.6 pg/mL with a range of 142,673.4-662,904.1 pg/mL



Cytometric bead array standard curve of MP01383-1, LYVE-1 Recombinant Matched Antibody Pair, PBS Only. Capture antibody: 84526-3-PBS. Detection antibody: 84526-2-PBS. Standard: Eg1615. Range: 0.469-60 ng/mL