

# Mouse DR5 Recombinant Matched Antibody Pair, PBS Only

Catalog Number: **MP01377-3**

## Capture Antibody Information

**Catalog Number:**  
84524-5-PBS  
**Host:**  
Rabbit  
**Isotype:**  
IgG  
**Purification Method:**  
Protein A purification

**Clone ID:**  
241847D3  
**Reactivity:**  
mouse  
**GenBank:**  
NM\_020275.4

**Conjugate:**  
Unconjugated  
**Full name:**  
tumor necrosis factor receptor superfamily, member 10b  
**Gene ID:**  
21933

## Detection Antibody Information

**Catalog Number:**  
84524-6-PBS  
**Host:**  
Rabbit  
**Isotype:**  
IgG  
**Purification Method:**  
Protein A purification

**Clone ID:**  
241847H4  
**Reactivity:**  
mouse  
**GenBank:**  
NM\_020275.4

**Conjugate:**  
Unconjugated  
**Full name:**  
tumor necrosis factor receptor superfamily, member 10b  
**Gene ID:**  
21933

## Applications

**Tested Applications:**  
Sandwich ELISA

**Range:**  
0.156-10 ng/mL (Sandwich ELISA)

**Recommended Dilutions:**  
It is recommended that this reagent should be titrated in each testing system to obtain optimal results.

## Product Information

MP01377-3 targets DR5 in immunoassays as a matched antibody pair. Validated in Sandwich ELISA.

Capture antibody: Mouse TRAIL R2/DR5/TNFRSF10B Recombinant antibody, PBS Only (Capture) 84524-5-PBS (241847D3). 100 µg. Concentration 1 mg/mL.

Detection antibody: Mouse TRAIL R2/DR5/TNFRSF10B Recombinant antibody, PBS Only (Detector) 84524-6-PBS (241847H4). 100 µg. Concentration 1 mg/mL.

Unconjugated rabbit recombinant monoclonal antibody pair in PBS only storage buffer at a concentration of 1 mg/mL, ready for conjugation. Created using Proteintech's proprietary in-house recombinant technology. Recombinant production enables unrivalled batch-to-batch consistency, easy scale-up, and future security of supply.

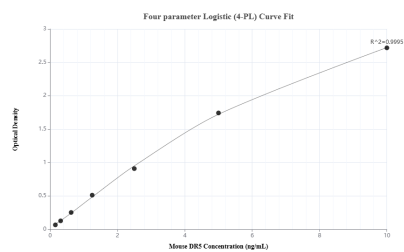
Matched antibody pairs are designed for use in a variety of assays and platforms that require matched antibody pairs.

Antibody use should be optimized for each application and assay.

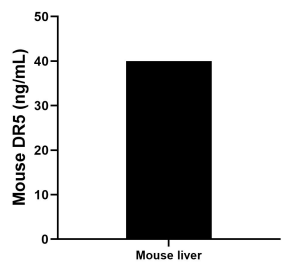
## Storage

**Storage:**  
Store at -80°C.  
**The product is shipped with ice packs. Upon receipt, store it immediately at -80°C**  
**Storage buffer:**  
PBS only

## Selected Validation Data



Sandwich ELISA standard curve of MP01377-3, Mouse DR5 Recombinant Matched Antibody Pair - PBS only. 84524-5-PBS was coated to a plate as the capture antibody and incubated with serial dilutions of standard Eg1579. 84524-6-PBS was HRP conjugated as the detection antibody. Range: 0.156-10 ng/mL



The mean DR5 concentration was determined to be 40.01 ng/mL in mouse liver tissue extract based on a 3.7 mg/mL extract load.