

# HSL Recombinant Matched Antibody Pair, PBS Only

Catalog Number: **MP01374-1**

## Capture Antibody Information

**Catalog Number:**  
84540-3-PBS

**Host:**  
Rabbit

**Isotype:**  
IgG

**Purification Method:**  
Protein A purification

**Clone ID:**  
241875F1

**Reactivity:**  
human

**GenBank:**  
BC070041

**Immunogen Catalog Number:**  
Ag11360

**Conjugate:**  
Unconjugated

**Full name:**  
lipase, hormone-sensitive

**Gene ID:**  
3991

## Detection Antibody Information

**Catalog Number:**  
84540-1-PBS

**Host:**  
Rabbit

**Isotype:**  
IgG

**Purification Method:**  
Protein A purification

**Clone ID:**  
241875B11

**Reactivity:**  
human, mouse, rat

**GenBank:**  
BC070041

**Immunogen Catalog Number:**  
Ag11360

**Conjugate:**  
Unconjugated

**Full name:**  
lipase, hormone-sensitive

**Gene ID:**  
3991

## Applications

**Tested Applications:**  
Cytometric bead array, Sandwich ELISA

**Range:**  
0.625-80 ng/mL (Cytometric Bead Array)  
0.313-20 ng/mL (Sandwich ELISA)

**Recommended Dilutions:**  
It is recommended that this reagent should be titrated in each testing system to obtain optimal results.

## Product Information

MP01374-1 targets HSL in immunoassays as a matched antibody pair. Validated in Cytometric bead array, Sandwich ELISA.

Capture antibody: HSL Recombinant antibody, PBS Only (Capture) 84540-3-PBS (241875F1). 100 µg. Concentration 1 mg/mL.

Detection antibody: HSL Recombinant antibody, PBS Only (Detector) 84540-1-PBS (241875B11). 100 µg. Concentration 1 mg/mL.

Unconjugated rabbit recombinant monoclonal antibody pair in PBS only storage buffer at a concentration of 1 mg/mL, ready for conjugation. Created using Proteintech's proprietary in-house recombinant technology. Recombinant production enables unrivalled batch-to-batch consistency, easy scale-up, and future security of supply.

Matched antibody pairs are designed for use in a variety of assays and platforms that require matched antibody pairs.

Antibody use should be optimized for each application and assay.

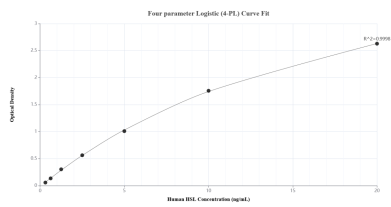
## Storage

**Storage:**  
Store at -80°C.

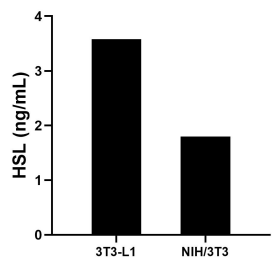
**The product is shipped with ice packs. Upon receipt, store it immediately at -80°C**

**Storage buffer:**  
PBS only

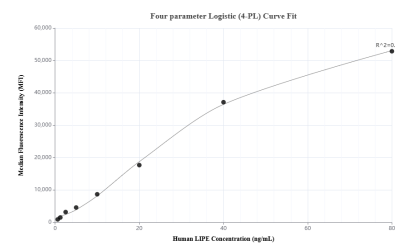
# Selected Validation Data



Sandwich ELISA standard curve of MP01374-1, Human HSL Recombinant Matched Antibody Pair - PBS only. 84540-3-PBS was coated to a plate as the capture antibody and incubated with serial dilutions of standard Ag11360. 84540-1-PBS was HRP conjugated as the detection antibody. Range: 0.313-20 ng/mL.



The mean HSL concentration was determined to be 3.58 ng/mL in 3T3-L1 cell extract based on a 1.30 mg/mL extract load and 1.80 ng/mL in NIH/3T3 cell extract based on a 5.90 mg/mL extract load.



Cytometric bead array standard curve of MP01374-1, HSL Recombinant Matched Antibody Pair, PBS Only. Capture antibody: 84540-3-PBS. Detection antibody: 84540-1-PBS. Standard: Ag11360. Range: 0.625-80 ng/mL.