

# Mouse RBP4 Recombinant Matched Antibody Pair, PBS Only

Catalog Number: **MP01365-1**

## Capture Antibody Information

**Catalog Number:**  
84503-1-PBS

**Host:**  
Rabbit

**Isotype:**  
IgG

**Purification Method:**  
Protein A purification

**Clone ID:**  
242040A5

**Reactivity:**  
mouse

**GenBank:**  
NM\_011255.3

**Immunogen Catalog Number:**  
Eg1140

**Conjugate:**  
Unconjugated

**Full name:**  
retinol binding protein 4, plasma

**Gene ID:**  
19662

## Detection Antibody Information

**Catalog Number:**  
84503-3-PBS

**Host:**  
Rabbit

**Isotype:**  
IgG

**Purification Method:**  
Protein A purification

**Clone ID:**  
242040G5

**Reactivity:**  
mouse

**GenBank:**  
NM\_011255.3

**Immunogen Catalog Number:**  
Eg1140

**Conjugate:**  
Unconjugated

**Full name:**  
retinol binding protein 4, plasma

**Gene ID:**  
19662

## Applications

**Tested Applications:**  
Cytometric bead array, Sandwich ELISA

**Range:**  
0.156-10 ng/mL (Cytometric Bead Array)  
0.313-20 ng/mL (Sandwich ELISA)

**Recommended Dilutions:**  
It is recommended that this reagent should be titrated in each testing system to obtain optimal results.

## Product Information

MP01365-1 targets RBP4 in immunoassays as a matched antibody pair. Validated in Cytometric bead array, Sandwich ELISA.

Capture antibody: Mouse RBP4 Recombinant antibody, PBS Only (Capture) 84503-1-PBS (242040A5). 100 µg. Concentration 1 mg/mL.

Detection antibody: Mouse RBP4 Recombinant antibody, PBS Only (Detector) 84503-3-PBS (242040G5). 100 µg. Concentration 1 mg/mL.

Unconjugated rabbit recombinant monoclonal antibody pair in PBS only storage buffer at a concentration of 1 mg/mL, ready for conjugation. Created using Proteintech's proprietary in-house recombinant technology. Recombinant production enables unrivalled batch-to-batch consistency, easy scale-up, and future security of supply.

Matched antibody pairs are designed for use in a variety of assays and platforms that require matched antibody pairs.

Antibody use should be optimized for each application and assay.

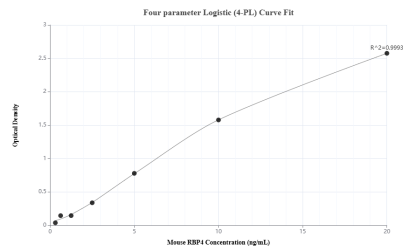
## Storage

**Storage:**  
Store at -80°C.

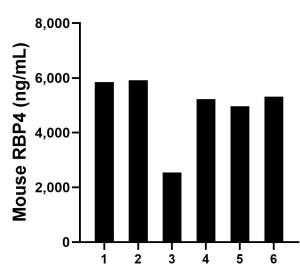
**The product is shipped with ice packs. Upon receipt, store it immediately at -80°C**

**Storage buffer:**  
PBS only

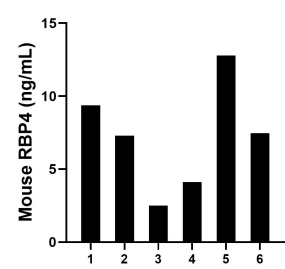
Selected Validation Data



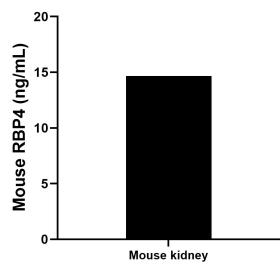
Sandwich ELISA standard curve of MP01365-1, Mouse RBP4 Recombinant Matched Antibody Pair - PBS only. 84503-1-PBS was coated to a plate as the capture antibody and incubated with serial dilutions of standard Eg1140. 84503-3-PBS was HRP conjugated as the detection antibody. Range: 0.313-20 ng/mL



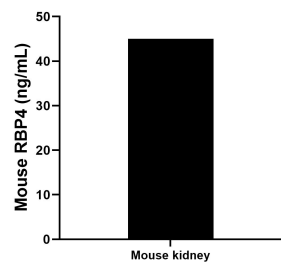
Serum of six mice was measured. The mouse RBP4 concentration of detected samples was determined to be 4,970.53 ng/mL with a range of 2,551.06 - 5,913.45 ng/mL.



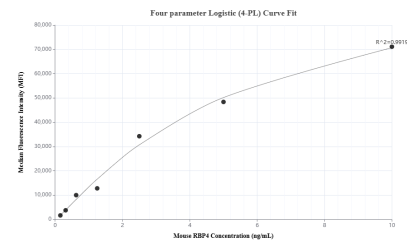
Urine of six mice was measured. The mouse RBP4 concentration of detected samples was determined to be 7.25 ng/mL with a range of 2.50 - 12.78 ng/mL



Mouse kidney tissue from one adult mouse (chopped in 1-2 mm pieces in 30 mL of medium) was cultured in RPMI supplemented with 10% fetal calfserum and 50  $\mu$  M  $\beta$ -mercaptoethanol. Aliquots of the cell culture supernates were removed, assayed for levels of mouse RBP4, and measured 14.68 ng/mL



The mean RBP4 concentration was determined to be 45.00 ng/mL in mouse kidney tissue extract based on a 1.9 mg/mL extract load.



Cytometric bead array standard curve of MP01365-1, MOUSE RBP4 Recombinant Matched Antibody Pair, PBS Only. Capture antibody: 84503-1-PBS. Detection antibody: 84503-3-PBS. Standard: Eg1140. Range: 0.156-10 ng/mL