

SAE1 Recombinant Matched Antibody Pair, PBS Only

Catalog Number: **MP01364-3**

Capture Antibody Information

Catalog Number: 84516-2-PBS	Clone ID: 241923C1	Conjugate: Unconjugated
Host: Rabbit	Reactivity: human	Full name: SUMO1 activating enzyme subunit 1
Isotype: IgG	GenBank: BC000344	Gene ID: 10055
Purification Method: Protein A purification	Immunogen Catalog Number: Ag0275	

Detection Antibody Information

Catalog Number: 84516-5-PBS	Clone ID: 241923D7	Conjugate: Unconjugated
Host: Rabbit	Reactivity: human	Full name: SUMO1 activating enzyme subunit 1
Isotype: IgG	GenBank: BC000344	Gene ID: 10055
Purification Method: Protein A purification	Immunogen Catalog Number: Ag0275	

Applications

Tested Applications: Sandwich ELISA	Range: 97.7-6250 pg/mL (Sandwich ELISA)	Recommended Dilutions: It is recommended that this reagent should be titrated in each testing system to obtain optimal results.
---	---	---

Product Information

MP01364-3 targets SAE1 in immunoassays as a matched antibody pair. Validated in Sandwich ELISA.

Capture antibody: SAE1 Recombinant antibody, PBS Only (Capture) 84516-2-PBS (241923C1). 100 µg. Concentration 1 mg/mL.

Detection antibody: SAE1 Recombinant antibody, PBS Only (Detector) 84516-5-PBS (241923D7). 100 µg. Concentration 1 mg/mL.

Alternative SAE1 matched antibody pairs: MP01364-1, MP01364-2

Unconjugated rabbit recombinant monoclonal antibody pair in PBS only storage buffer at a concentration of 1 mg/mL, ready for conjugation. Created using Proteintech's proprietary in-house recombinant technology. Recombinant production enables unrivalled batch-to-batch consistency, easy scale-up, and future security of supply.

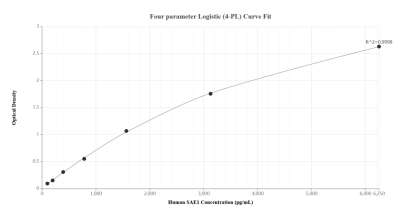
Matched antibody pairs are designed for use in a variety of assays and platforms that require matched antibody pairs.

Antibody use should be optimized for each application and assay.

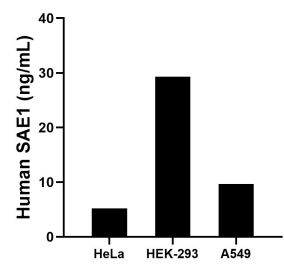
Storage

Storage:
Store at -80°C.
The product is shipped with ice packs. Upon receipt, store it immediately at -80°C
Storage buffer:
PBS only

Selected Validation Data



Sandwich ELISA standard curve of MP01364-3, Human SAE1 Recombinant Matched Antibody Pair - PBS only. 84516-2-PBS was coated to a plate as the capture antibody and incubated with serial dilutions of standard Ag0275. 84516-5-PBS was HRP conjugated as the detection antibody. Range: 97.7-6250 pg/mL.



The mean SAE1 concentration was determined to be 5.2 ng/mL in HeLa cell extract based on a 1.5 mg/mL extract load, 29.3 ng/mL in HEK-293 cell extract based on a 1.5 mg/mL extract load and 9.7 ng/mL in A549 cell extract based on a 1.5 mg/mL extract load.