

For Research Use Only

CD43 Recombinant Matched Antibody Pair, PBS Only



Catalog Number:MP01360-3

Capture Antibody Information

Catalog Number:
84539-8-PBS

Host:
Rabbit

Isotype:
IgG

Purification Method:
Protein A purification

Clone ID:
260458E6

Reactivity:
human

GenBank:
NM_003123.6

Immunogen Catalog Number:
Eg1761

Conjugate:
Unconjugated

Full name:
sialophorin

Gene ID:
6693

Detection Antibody Information

Catalog Number:
84539-7-PBS

Host:
Rabbit

Isotype:
IgG

Purification Method:
Protein A purification

Clone ID:
260458B8

Reactivity:
human

GenBank:
NM_003123.6

Immunogen Catalog Number:
Eg1761

Conjugate:
Unconjugated

Full name:
sialophorin

Gene ID:
6693

Applications

Tested Applications:
Cytometric bead array

Range:
0.156-20 ng/mL (Cytometric Bead Array)

Recommended Dilutions:
It is recommended that this reagent should be titrated in each testing system to obtain optimal results.

Product Information

MP01360-3 targets CD43 in immunoassays as a matched antibody pair. Validated in Cytometric bead array.

Capture antibody: CD43 Recombinant monoclonal antibody, PBS Only (Capture) 84539-8-PBS (260458E6). 100 μ g. Concentration 1 mg/mL.

Detection antibody: CD43 Recombinant monoclonal antibody, PBS Only (Detector) 84539-7-PBS (260458B8). 100 μ g. Concentration 1 mg/mL.

Unconjugated rabbit recombinant monoclonal antibody pair in PBS only storage buffer at a concentration of 1 mg/mL, ready for conjugation. Created using Proteintech's proprietary in-house recombinant technology. Recombinant production enables unrivalled batch-to-batch consistency, easy scale-up, and future security of supply.

Matched antibody pairs are designed for use in a variety of assays and platforms that require matched antibody pairs.

Antibody use should be optimized for each application and assay.

Storage

Storage:
Store at -80°C.

The product is shipped with ice packs. Upon receipt, store it immediately at -80°C

Storage buffer:
PBS only

For technical support and original validation data for this product please contact:

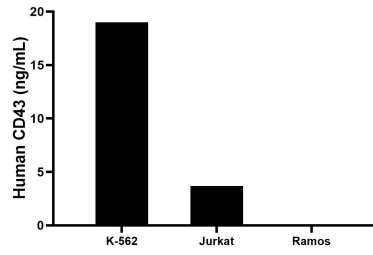
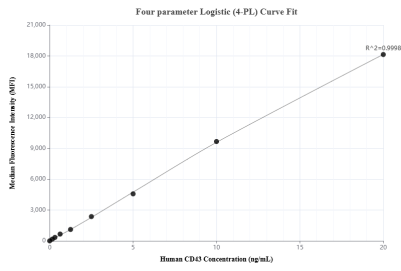
T: 4006900926

E: Proteintech-CN@ptglab.com

W: ptgcn.com

This product is exclusively available under Proteintech Group brand and is not available to purchase from any other manufacturer.

Selected Validation Data



Cytometric bead array standard curve of MP01360-3, CD43 Recombinant Matched Antibody Pair, PBS Only. Capture antibody: 84539-8-PBS. Detection antibody: 84539-7-PBS. Standard: Eg1761. Range: 0.156-20 ng/mL

The mean CD43 concentration was determined to be 19.0 ng/mL in K-562 cell extract based on a 1.0 mg/mL extract load, 3.7 ng/mL in Jurkat cell extract based on a 1.0 mg/mL extract load, Ramos cell extract were served as a negative control.