

Mouse Neutrophil elastase Recombinant Matched Antibody Pair, PBS Only

Catalog Number: **MP01355-4**

Capture Antibody Information

Catalog Number:

84473-4-PBS

Host:

Rabbit

Isotype:

IgG

Purification Method:

Protein A purification

Clone ID:

241842E7

Reactivity:

mouse

GenBank:

NM_015779.2

Conjugate:

Unconjugated

Full name:

elastase 2, neutrophil

Gene ID:

50701

Detection Antibody Information

Catalog Number:

84473-5-PBS

Host:

Rabbit

Isotype:

IgG

Purification Method:

Protein A purification

Clone ID:

241842A6

Reactivity:

mouse

GenBank:

NM_015779.2

Conjugate:

Unconjugated

Full name:

elastase 2, neutrophil

Gene ID:

50701

Applications

Tested Applications:

Sandwich ELISA

Range:

39.1-1250 pg/mL (Sandwich ELISA)

Recommended Dilutions:

It is recommended that this reagent should be titrated in each testing system to obtain optimal results.

Product Information

MP01355-4 targets Neutrophil elastase in immunoassays as a matched antibody pair. Validated in Sandwich ELISA.

Capture antibody: Mouse Neutrophil elastase Recombinant antibody, PBS Only (Capture/Detector) 84473-4-PBS (241842E7). 100 µg. Concentration 1 mg/mL.

Detection antibody: Mouse Neutrophil elastase Recombinant antibody, PBS Only (Detector) 84473-5-PBS (241842A6). 100 µg. Concentration 1 mg/mL.

Unconjugated rabbit recombinant monoclonal antibody pair in PBS only storage buffer at a concentration of 1 mg/mL, ready for conjugation. Created using Proteintech's proprietary in-house recombinant technology. Recombinant production enables unrivalled batch-to-batch consistency, easy scale-up, and future security of supply.

Matched antibody pairs are designed for use in a variety of assays and platforms that require matched antibody pairs.

Antibody use should be optimized for each application and assay.

Storage

Storage:

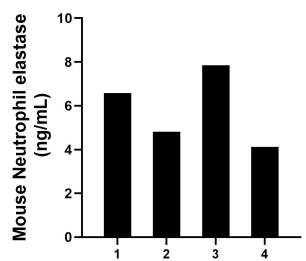
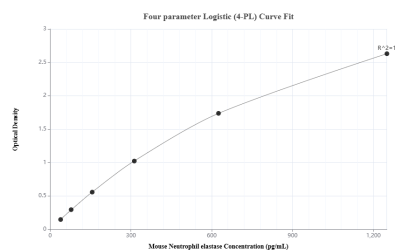
Store at -80°C.

The product is shipped with ice packs. Upon receipt, store it immediately at -80°C

Storage buffer:

PBS only

Selected Validation Data



Sandwich ELISA standard curve of MP01355-4, Mouse Neutrophil elastase Recombinant Matched Antibody Pair - PBS only. 84473-4-PBS was coated to a plate as the capture antibody and incubated with serial dilutions of standard Eg2126. 84473-5-PBS was HRP conjugated as the detection antibody. Range: 39.1-1250 pg/mL

Serum of four mice was measured. The mouse Neutrophil elastase concentration of detected samples was determined to be 5.84 ng/mL with a range of 4.12 - 7.85 ng/mL.