

For Research Use Only

# DKK1 Recombinant Matched Antibody Pair, PBS Only



Catalog Number:MP01353-2

## Capture Antibody Information

Catalog Number:  
84471-5-PBS

Host:  
Rabbit

Isotype:  
IgG

Purification Method:  
Protein A purification

Clone ID:  
251996B4

Reactivity:  
human

GenBank:  
NM\_012242.2

Immunogen Catalog Number:  
Eg3114

Conjugate:  
Unconjugated

Full name:  
dickkopf homolog 1 (Xenopus laevis)

Gene ID:  
22943

## Detection Antibody Information

Catalog Number:  
84471-4-PBS

Host:  
Rabbit

Isotype:  
IgG

Purification Method:  
Protein A purification

Clone ID:  
251996G9

Reactivity:  
human

GenBank:  
NM\_012242.2

Immunogen Catalog Number:  
Eg3114

Conjugate:  
Unconjugated

Full name:  
dickkopf homolog 1 (Xenopus laevis)

Gene ID:  
22943

## Applications

Tested Applications:  
Sandwich ELISA

Range:  
78.1-2500 pg/mL (Sandwich ELISA)

Recommended Dilutions:  
It is recommended that this reagent should be titrated in each testing system to obtain optimal results.

## Product Information

MP01353-2 targets DKK1 in immunoassays as a matched antibody pair. Validated in Sandwich ELISA.

Capture antibody: DKK1 Recombinant monoclonal antibody, PBS Only (Capture) 84471-5-PBS (251996B4). 100  $\mu$ g. Concentration 1 mg/mL.

Detection antibody: DKK1 Recombinant monoclonal antibody, PBS Only (Detector) 84471-4-PBS (251996G9). 100  $\mu$ g. Concentration 1 mg/mL.

Unconjugated rabbit recombinant monoclonal antibody pair in PBS only storage buffer at a concentration of 1 mg/mL, ready for conjugation. Created using Proteintech's proprietary in-house recombinant technology. Recombinant production enables unrivalled batch-to-batch consistency, easy scale-up, and future security of supply.

Matched antibody pairs are designed for use in a variety of assays and platforms that require matched antibody pairs.

Antibody use should be optimized for each application and assay.

## Storage

Storage:

Store at -80°C.

The product is shipped with ice packs. Upon receipt, store it immediately at -80°C

Storage buffer:  
PBS only

For technical support and original validation data for this product please contact:

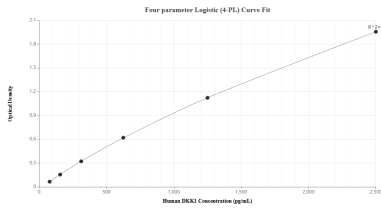
T: 4006900926

E: Proteintech-CN@ptglab.com

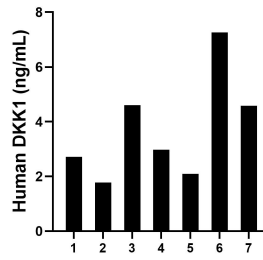
W: ptgcn.com

This product is exclusively available under Proteintech Group brand and is not available to purchase from any other manufacturer.

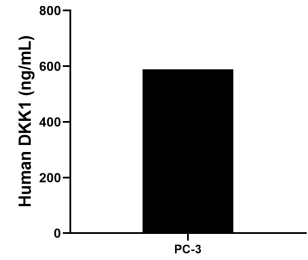
## Selected Validation Data



Sandwich ELISA standard curve of MP01353-2, Human DKK1 Recombinant Matched Antibody Pair - PBS only. 84471-5-PBS was coated to a plate as the capture antibody and incubated with serial dilutions of standard Eg3114. 84471-4-PBS was HRP conjugated as the detection antibody. Range: 78.1-2500 pg/mL



Serum of seven individual healthy human donors was measured. The human DKK1 concentration of detected samples was determined to be 3.71 ng/mL with a range of 1.78 - 7.26 ng/mL.



PC-3 human prostate cancer cells were cultured in RPMI supplemented with 10% fetal bovine serum, 2 mM L-glutamine, 100 U/mL penicillin, and 100  $\mu$ g/mL streptomycin sulfate for 72 hours. Aliquots of the cell culture supernates were removed, assayed for levels of human DKK1 and measured 588.98 ng/mL.