

IGFBP3 Recombinant Matched Antibody Pair, PBS Only

Catalog Number: **MP01352-2**

Capture Antibody Information

Catalog Number:
84470-3-PBS
Host:
Rabbit
Isotype:
IgG
Purification Method:
Protein A purification

Clone ID:
241723C5
Reactivity:
human
GenBank:
NM_000598.5

Conjugate:
Unconjugated
Full name:
insulin-like growth factor binding protein 3
Gene ID:
3486

Detection Antibody Information

Catalog Number:
84470-1-PBS
Host:
Rabbit
Isotype:
IgG
Purification Method:
Protein A purification

Clone ID:
241723A6
Reactivity:
human
GenBank:
NM_000598.5

Conjugate:
Unconjugated
Full name:
insulin-like growth factor binding protein 3
Gene ID:
3486

Applications

Tested Applications:
Cytometric bead array, Sandwich ELISA

Range:
0.625-80 ng/mL (Cytometric Bead Array)
0.195-12.5 ng/mL (Sandwich ELISA)

Recommended Dilutions:
It is recommended that this reagent should be titrated in each testing system to obtain optimal results.

Product Information

MP01352-2 targets IGFBP3 in immunoassays as a matched antibody pair. Validated in Cytometric bead array, Sandwich ELISA.

Capture antibody: IGFBP3 Recombinant antibody, PBS Only (Capture/Detector) 84470-3-PBS (241723C5). 100 µg. Concentration 1 mg/mL.

Detection antibody: IGFBP3 Recombinant antibody, PBS Only (Detector) 84470-1-PBS (241723A6). 100 µg. Concentration 1 mg/mL.

Alternative IGFBP3 matched antibody pairs: MP01202-1, MP01202-2, MP01202-3, MP01352-1, MP01352-3

Unconjugated rabbit recombinant monoclonal antibody pair in PBS only storage buffer at a concentration of 1 mg/mL, ready for conjugation. Created using Proteintech's proprietary in-house recombinant technology. Recombinant production enables unrivalled batch-to-batch consistency, easy scale-up, and future security of supply.

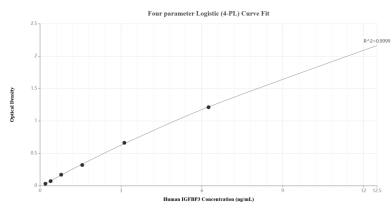
Matched antibody pairs are designed for use in a variety of assays and platforms that require matched antibody pairs.

Antibody use should be optimized for each application and assay.

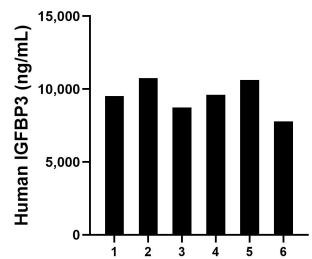
Storage

Storage:
Store at -80°C.
The product is shipped with ice packs. Upon receipt, store it immediately at -80°C
Storage buffer:
PBS only

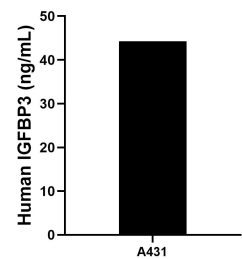
Selected Validation Data



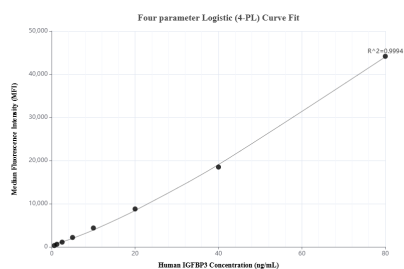
Sandwich ELISA standard curve of MP01352-2, Human IGFBP3 Recombinant Matched Antibody Pair - PBS only. 84470-3-PBS was coated to a plate as the capture antibody and incubated with serial dilutions of standard Eg1827. 84470-1-PBS was HRP conjugated as the detection antibody. Range: 0.195-12.5 ng/mL.



Serum of six individual healthy human donors was measured. The IGFBP3 concentration of detected samples was determined to be 9,505.05 ng/mL with a range of 7,790.22-10,751.16 ng/mL.



A431 were cultured in DMEM supplemented with 10% fetal bovine serum, 2.5 mM L-glutamine, 100 U/mL penicillin, and 100 μ g/mL streptomycin sulfate. An aliquot of the cell culture supernate was removed, assayed for human IGFBP3, and measured 44.22 ng/mL.



Cytometric bead array standard curve of MP01352-2, IGFBP3 Recombinant Matched Antibody Pair, PBS Only. Capture antibody: 84470-3-PBS. Detection antibody: 84470-1-PBS. Standard: Eg1827. Range: 0.625-80 ng/mL.