

# Mouse Tie-2 Recombinant Matched Antibody Pair, PBS Only

Catalog Number:MP01351-2

## Capture Antibody Information

**Catalog Number:**  
84469-4-PBS  
**Host:**  
Rabbit  
**Isotype:**  
IgG  
**Purification Method:**  
Protein A purification

**Clone ID:**  
241753H3  
**Reactivity:**  
mouse  
**GenBank:**  
NM\_001290549.1

**Conjugate:**  
Unconjugated  
**Full name:**  
endothelial-specific receptor tyrosine kinase  
**Gene ID:**  
21687

## Detection Antibody Information

**Catalog Number:**  
84469-1-PBS  
**Host:**  
Rabbit  
**Isotype:**  
IgG  
**Purification Method:**  
Protein A purification

**Clone ID:**  
241753C1  
**Reactivity:**  
mouse  
**GenBank:**  
NM\_001290549.1

**Conjugate:**  
Unconjugated  
**Full name:**  
endothelial-specific receptor tyrosine kinase  
**Gene ID:**  
21687

## Applications

**Tested Applications:**  
Cytometric bead array, Sandwich ELISA

**Range:**  
0.625-80 ng/mL (Cytometric Bead Array)  
125-4000 pg/mL (Sandwich ELISA)

**Recommended Dilutions:**  
It is recommended that this reagent should be titrated in each testing system to obtain optimal results.

## Product Information

MP01351-2 targets Tie-2 in immunoassays as a matched antibody pair. Validated in Cytometric bead array, Sandwich ELISA.

Capture antibody: Mouse Tie-2 Recombinant antibody, PBS Only (Capture) 84469-4-PBS (241753H3). 100 µg. Concentration 1 mg/mL.

Detection antibody: Mouse Tie-2 Recombinant antibody, PBS Only (Detector) 84469-1-PBS (241753C1). 100 µg. Concentration 1 mg/mL.

Unconjugated rabbit recombinant monoclonal antibody pair in PBS only storage buffer at a concentration of 1 mg/mL, ready for conjugation. Created using Proteintech's proprietary in-house recombinant technology. Recombinant production enables unrivalled batch-to-batch consistency, easy scale-up, and future security of supply.

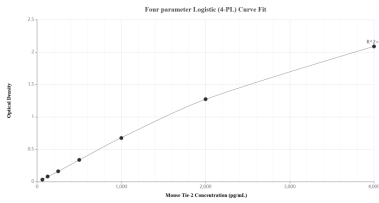
Matched antibody pairs are designed for use in a variety of assays and platforms that require matched antibody pairs.

Antibody use should be optimized for each application and assay.

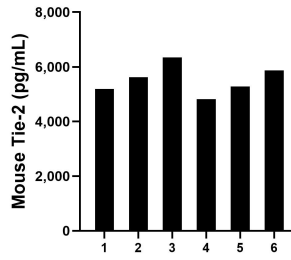
## Storage

**Storage:**  
Store at -80°C.  
**The product is shipped with ice packs. Upon receipt, store it immediately at -80°C**  
**Storage buffer:**  
PBS only

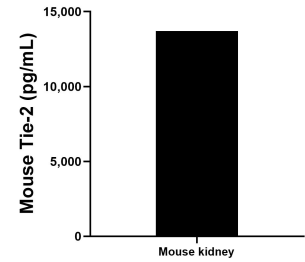
## Selected Validation Data



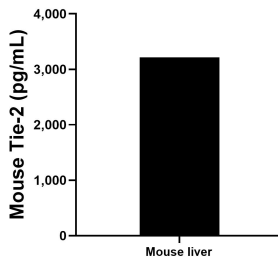
Sandwich ELISA standard curve of MP01351-2, Mouse Tie-2 Recombinant Matched Antibody Pair - PBS only. 84469-4-PBS was coated to a plate as the capture antibody and incubated with serial dilutions of standard Eg1514. 84469-1-PBS was HRP conjugated as the detection antibody. Range: 125-4000 pg/mL



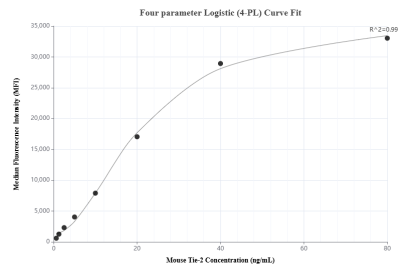
Serum of six mice was measured. The Tie-2 concentration of detected samples was determined to be 5520.9 pg/mL with a range of 4813.2-6347.4 pg/mL



One mouse kidney was cultured in RPMI 1640 supplemented with 10% fetal bovine serum, 50  $\mu$  M  $\beta$ -mercaptoethanol, 2 mM L-glutamine, and 100  $\mu$  g/mL of streptomycin sulfate. An aliquot of the cell culture supernatant was removed, assayed for mouse Tie-2 and measured 13,696.0 pg/mL



The mean Tie-2 concentration was determined to be 3214.5 pg/mL in mouse liver tissue homogenate based on a 3.3 mg/mL extract load.



Cytometric bead array standard curve of MP01351-2, MOUSE Tie-2 Recombinant Matched Antibody Pair, PBS Only. Capture antibody: 84469-4-PBS. Detection antibody: 84469-1-PBS. Standard: Eg1514. Range: 0.625-80 ng/mL