

LMO7 Recombinant Matched Antibody Pair, PBS Only

Catalog Number: **MP01336-4**

Capture Antibody Information

Catalog Number:
84495-4-PBS

Host:
Rabbit

Isotype:
IgG

Purification Method:
Protein A purification

Clone ID:
241781D11

Reactivity:
human

GenBank:
NM_005358

Immunogen Catalog Number:
Ag30016

Conjugate:
Unconjugated

Full name:
LIM domain 7

Gene ID:
4008

Detection Antibody Information

Catalog Number:
84495-1-PBS

Host:
Rabbit

Isotype:
IgG

Purification Method:
Protein A purification

Clone ID:
241781C9

Reactivity:
human

GenBank:
NM_005358

Immunogen Catalog Number:
Ag30016

Conjugate:
Unconjugated

Full name:
LIM domain 7

Gene ID:
4008

Applications

Tested Applications:
Sandwich ELISA

Range:
39.1-2500 pg/mL (Sandwich ELISA)

Recommended Dilutions:
It is recommended that this reagent should be titrated in each testing system to obtain optimal results.

Product Information

MP01336-4 targets LMO7 in immunoassays as a matched antibody pair. Validated in Sandwich ELISA.

Capture antibody: LMO7 Recombinant antibody, PBS Only (Capture) 84495-4-PBS (241781D11). 100 µg. Concentration 1 mg/mL.

Detection antibody: LMO7 Recombinant antibody, PBS Only (Capture/Detector) 84495-1-PBS (241781C9). 100 µg. Concentration 1 mg/mL.

Alternative LMO7 matched antibody pairs: MP01336-1, MP01336-2, MP01336-3

Unconjugated rabbit recombinant monoclonal antibody pair in PBS only storage buffer at a concentration of 1 mg/mL, ready for conjugation. Created using Proteintech's proprietary in-house recombinant technology. Recombinant production enables unrivalled batch-to-batch consistency, easy scale-up, and future security of supply.

Matched antibody pairs are designed for use in a variety of assays and platforms that require matched antibody pairs.

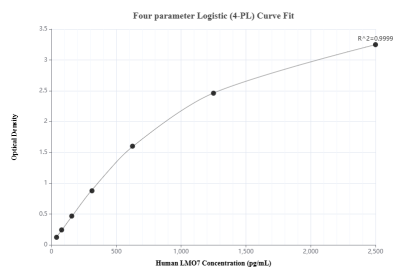
Antibody use should be optimized for each application and assay.

Storage

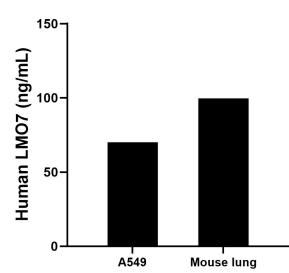
Storage:
Store at -80°C.
The product is shipped with ice packs. Upon receipt, store it immediately at -80°C

Storage buffer:
PBS only

Selected Validation Data



Sandwich ELISA standard curve of MP01336-4, Human LMO7 Recombinant Matched Antibody Pair - PBS only. 84495-4-PBS was coated to a plate as the capture antibody and incubated with serial dilutions of standard Ag30016. 84495-1-PBS was HRP conjugated as the detection antibody. Range: 39.1-2500 pg/mL



The mean LMO7 concentration was determined to be 70.01 ng/mL in A549 cell extract based on a 2.5 mg/mL extract load and 99.53 ng/mL in mouse lung tissue extract based on a 1.6 mg/mL extract load.