

Mouse EPCR/CD201 Recombinant Matched Antibody Pair, PBS Only

Catalog Number: **MP01323-3**

Capture Antibody Information

Catalog Number: 84494-2-PBS	Clone ID: 241853A9	Conjugate: Unconjugated
Host: Rabbit	Reactivity: mouse	Full name: protein C receptor, endothelial
Isotype: IgG	GenBank: NM_011171.2	Gene ID: 19124
Purification Method: Protein A purification	Immunogen Catalog Number: Eg1517	

Detection Antibody Information

Catalog Number: 84494-3-PBS	Clone ID: 241853C5	Conjugate: Unconjugated
Host: Rabbit	Reactivity: mouse	Full name: protein C receptor, endothelial
Isotype: IgG	GenBank: NM_011171.2	Gene ID: 19124
Purification Method: Protein A purification	Immunogen Catalog Number: Eg1517	

Applications

Tested Applications: Cytometric bead array, Sandwich ELISA	Range: 0.469-60 ng/mL (Cytometric Bead Array) 39.1-2500 pg/mL (Sandwich ELISA)	Recommended Dilutions: It is recommended that this reagent should be titrated in each testing system to obtain optimal results.
----------------------------------------------------------------------	---------------------------------------------------------------------------------------------	-------------------------------------------------------------------------------------------------------------------------------------------

Product Information

MP01323-3 targets EPCR/CD201 in immunoassays as a matched antibody pair. Validated in Cytometric bead array, Sandwich ELISA.

Capture antibody: Mouse EPCR/CD201 Recombinant antibody, PBS Only (Capture) 84494-2-PBS (241853A9). 100 µg. Concentration 1 mg/mL.

Detection antibody: Mouse EPCR/CD201 Recombinant antibody, PBS Only (Detector) 84494-3-PBS (241853C5). 100 µg. Concentration 1 mg/mL.

Unconjugated rabbit recombinant monoclonal antibody pair in PBS only storage buffer at a concentration of 1 mg/mL, ready for conjugation. Created using Proteintech's proprietary in-house recombinant technology. Recombinant production enables unrivalled batch-to-batch consistency, easy scale-up, and future security of supply.

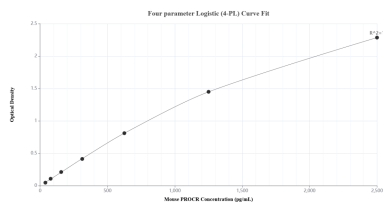
Matched antibody pairs are designed for use in a variety of assays and platforms that require matched antibody pairs.

Antibody use should be optimized for each application and assay.

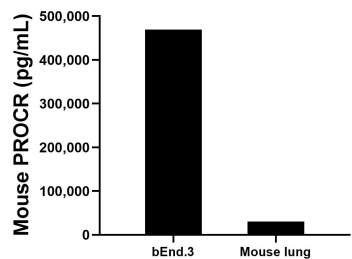
Storage

Storage:
Store at -80°C.
The product is shipped with ice packs. Upon receipt, store it immediately at -80°C
Storage buffer:
PBS only

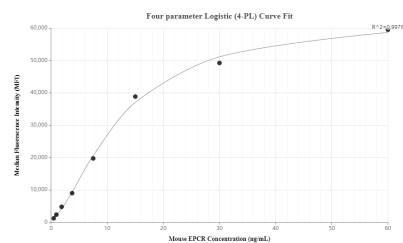
Selected Validation Data



Sandwich ELISA standard curve of MP01323-3, Mouse PROCR Recombinant Matched Antibody Pair - PBS only. 84494-2-PBS was coated to a plate as the capture antibody and incubated with serial dilutions of standard Eg1517. 84494-3-PBS was HRP conjugated as the detection antibody. Range: 39.1-2500 pg/mL.



The mean PROCR concentration was determined to be 469,591.3 pg/mL in bEnd.3 cell extract based on a 1.8 mg/mL extract load and 30,645.7 pg/mL in mouse lung tissue extract based on a 1.6 mg/mL extract load.



Cytometric bead array standard curve of MP01323-3, MOUSE EPCR Recombinant Matched Antibody Pair, PBS Only. Capture antibody: 84494-2-PBS. Detection antibody: 84494-3-PBS. Standard: Eg1517. Range: 0.469-60 ng/mL.