

Mouse CD147 Recombinant Matched Antibody Pair, PBS Only

Catalog Number: **MP01320-4**

Capture Antibody Information

Catalog Number:

84488-5-PBS

Host:

Rabbit

Isotype:

IgG

Purification Method:

Protein A purification

Clone ID:

241852B10

Reactivity:

mouse

GenBank:

NM_009768.2

Conjugate:

Unconjugated

Full name:

basigin

Gene ID:

12215

Detection Antibody Information

Catalog Number:

84488-4-PBS

Host:

Rabbit

Isotype:

IgG

Purification Method:

Protein A purification

Clone ID:

241852H7

Reactivity:

mouse

GenBank:

NM_009768.2

Conjugate:

Unconjugated

Full name:

basigin

Gene ID:

12215

Applications

Tested Applications:

Sandwich ELISA

Range:

78.1-5000 pg/mL (Sandwich ELISA)

Recommended Dilutions:

It is recommended that this reagent should be titrated in each testing system to obtain optimal results.

Product Information

MP01320-4 targets CD147 in immunoassays as a matched antibody pair. Validated in Sandwich ELISA.

Capture antibody: Mouse EMMPRIN/CD147 Recombinant antibody, PBS Only (Capture) 84488-5-PBS (241852B10).
100 µg. Concentration 1 mg/mL.

Detection antibody: Mouse EMMPRIN/CD147 Recombinant antibody, PBS Only (Detector) 84488-4-PBS (241852H7).
100 µg. Concentration 1 mg/mL.

Unconjugated rabbit recombinant monoclonal antibody pair in PBS only storage buffer at a concentration of 1 mg/mL, ready for conjugation. Created using Proteintech's proprietary in-house recombinant technology. Recombinant production enables unrivalled batch-to-batch consistency, easy scale-up, and future security of supply.

Matched antibody pairs are designed for use in a variety of assays and platforms that require matched antibody pairs.

Antibody use should be optimized for each application and assay.

Storage

Storage:

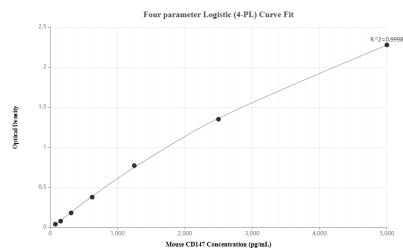
Store at -80°C.

The product is shipped with ice packs. Upon receipt, store it immediately at -80°C

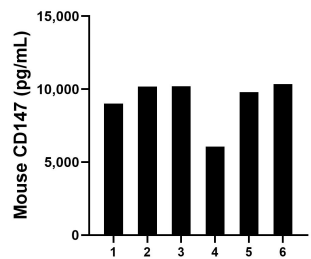
Storage buffer:

PBS only

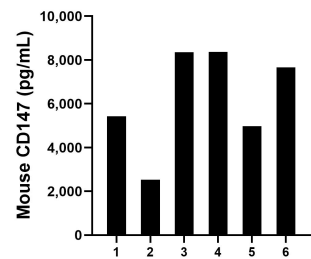
Selected Validation Data



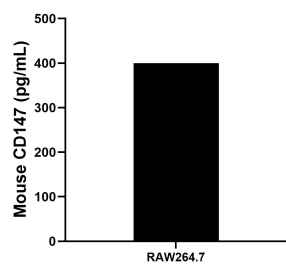
Sandwich ELISA standard curve of MP01320-4, Mouse CD147 Recombinant Matched Antibody Pair - PBS only. 84488-5-PBS was coated to a plate as the capture antibody and incubated with serial dilutions of standard Eg1530. 84488-4-PBS was HRP conjugated as the detection antibody. Range: 78.1-5000 pg/mL



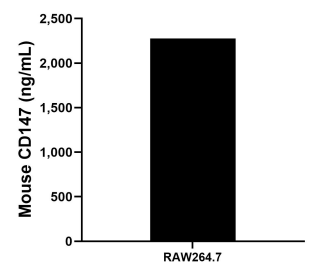
Serum of six mice was measured. The mouse CD147 concentration of detected samples was determined to be 9,267.4 pg/mL with a range of 6,072.1 - 10,344.1 pg/mL



Urine of six mice was measured. The mouse CD147 concentration of detected samples was determined to be 6,220.5 pg/mL with a range of 2,528.0 - 8372.5 pg/mL



RAW264.7 cells were cultured in DMEM supplemented with 10% fetal bovine serum. An aliquot of the cell culture supernate was removed, assayed for mouse CD147, and measured 400.0 pg/mL



The mean CD147 concentration was determined to be 2,277.8 ng/mL in RAW264.7 cell extract based on a 4.8 mg/mL extract load.