

For Research Use Only

# CCL20/MIP-3 alpha Recombinant Matched Antibody Pair, PBS Only



Catalog Number:MP01301-4

## Capture Antibody Information

**Catalog Number:**

84413-1-PBS

**Host:**

Rabbit

**Isotype:**

IgG

**Purification Method:**

Protein A purification

**Clone ID:**

241694A5

**Reactivity:**

human

**GenBank:**

NM\_004591.3

**Conjugate:**

Unconjugated

**Full name:**

chemokine (C-C motif) ligand 20

**Gene ID:**

6364

## Detection Antibody Information

**Catalog Number:**

84413-5-PBS

**Host:**

Rabbit

**Isotype:**

IgG

**Purification Method:**

Protein A purification

**Clone ID:**

241694D5

**Reactivity:**

human

**GenBank:**

NM\_004591.3

**Conjugate:**

Unconjugated

**Full name:**

chemokine (C-C motif) ligand 20

**Gene ID:**

6364

## Applications

**Tested Applications:**

Sandwich ELISA

**Range:**

42.2-2700 pg/mL (Sandwich ELISA)

**Recommended Dilutions:**

It is recommended that this reagent should be titrated in each testing system to obtain optimal results.

## Product Information

MP01301-4 targets CCL20/MIP-3 alpha in immunoassays as a matched antibody pair. Validated in Sandwich ELISA.

Capture antibody: CCL20/MIP-3 alpha Recombinant antibody, PBS Only (Capture) 84413-1-PBS (241694A5). 100 µg. Concentration 1 mg/mL.

Detection antibody: CCL20 Recombinant antibody, PBS Only (Detector) 84413-5-PBS (241694D5). 100 µg. Concentration 1 mg/mL.

Unconjugated rabbit recombinant monoclonal antibody pair in PBS only storage buffer at a concentration of 1 mg/mL, ready for conjugation. Created using Proteintech's proprietary in-house recombinant technology. Recombinant production enables unrivalled batch-to-batch consistency, easy scale-up, and future security of supply.

Matched antibody pairs are designed for use in a variety of assays and platforms that require matched antibody pairs.

Antibody use should be optimized for each application and assay.

## Storage

**Storage:**

Store at -80°C.

**The product is shipped with ice packs. Upon receipt, store it immediately at -80°C**

**Storage buffer:**

PBS only

For technical support and original validation data for this product please contact:

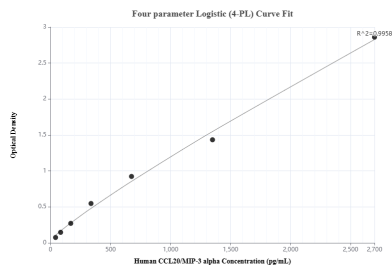
T: 4006900926

E: [Proteintech-CN@ptglab.com](mailto:Proteintech-CN@ptglab.com)

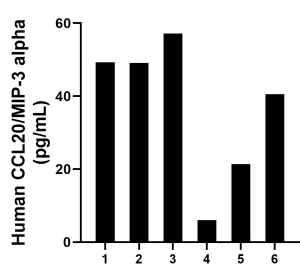
W: [ptgcn.com](http://ptgcn.com)

**This product is exclusively available under Proteintech Group brand and is not available to purchase from any other manufacturer.**

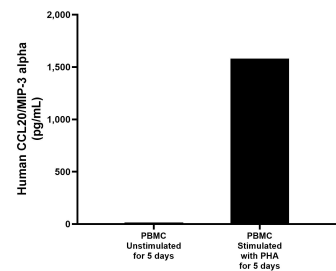
## Selected Validation Data



Sandwich ELISA standard curve of MP01301-4, Human CCL20/MIP-3 alpha Recombinant Matched Antibody Pair - PBS only. 84413-1-PBS was coated to a plate as the capture antibody and incubated with serial dilutions of standard Eg2398. 84413-5-PBS was HRP conjugated as the detection antibody. Range: 42.2-2700 pg/mL



Serum of six individual healthy human donors was measured. The human CCL20/MIP-3 alpha concentration of detected samples was determined to be 37.3 pg/mL with a range of 6.0 - 57.1 pg/mL



Human peripheral blood mononuclear cells (PBMC) were cultured unstimulated or stimulated with 10 µg/mL PHA for 5 days. The mean CCL20/MIP-3 alpha concentration was determined to be 14.8 pg/mL in unstimulated PBMC supernatant, 1,579.6 pg/mL in PHA stimulated PBMC supernatant.