

IL-1 alpha Recombinant Matched Antibody Pair, PBS Only

Catalog Number: **MP01289-3**

Capture Antibody Information

Catalog Number: 84411-2-PBS	Clone ID: 241752E8	Conjugate: Unconjugated
Host: Rabbit	Reactivity: human	Full name: interleukin 1, alpha
Isotype: IgG	GenBank: BC013142	Gene ID: 3552
Purification Method: Protein A purification	Immunogen Catalog Number: HZ-1320	

Detection Antibody Information

Catalog Number: 84411-3-PBS	Clone ID: 241752F11	Conjugate: Unconjugated
Host: Rabbit	Reactivity: human	Full name: interleukin 1, alpha
Isotype: IgG	GenBank: BC013142	Gene ID: 3552
Purification Method: Protein A purification	Immunogen Catalog Number: HZ-1320	

Applications

Tested Applications: Sandwich ELISA	Range: 9.77-313 pg/mL (Sandwich ELISA)	Recommended Dilutions: It is recommended that this reagent should be titrated in each testing system to obtain optimal results.
---	--	---

Product Information

MP01289-3 targets IL-1 alpha in immunoassays as a matched antibody pair. Validated in Sandwich ELISA.

Capture antibody: IL1A Recombinant antibody, PBS Only (Capture) 84411-2-PBS (241752E8). 100 µg. Concentration 1 mg/mL.

Detection antibody: IL1A Recombinant antibody, PBS Only (Capture/Detector) 84411-3-PBS (241752F11). 100 µg. Concentration 1 mg/mL.

Unconjugated rabbit recombinant monoclonal antibody pair in PBS only storage buffer at a concentration of 1 mg/mL, ready for conjugation. Created using Proteintech's proprietary in-house recombinant technology. Recombinant production enables unrivalled batch-to-batch consistency, easy scale-up, and future security of supply.

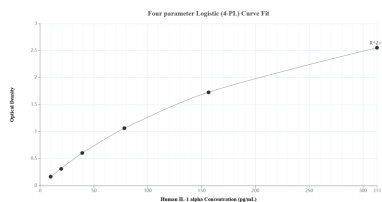
Matched antibody pairs are designed for use in a variety of assays and platforms that require matched antibody pairs.

Antibody use should be optimized for each application and assay.

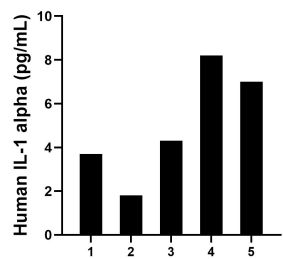
Storage

Storage:
Store at -80°C.
The product is shipped with ice packs. Upon receipt, store it immediately at -80°C
Storage buffer:
PBS only

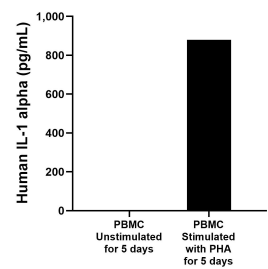
Selected Validation Data



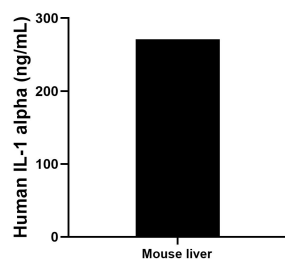
Sandwich ELISA standard curve of MP01289-3, Human IL-1 alpha Recombinant Matched Antibody Pair - PBS only. 84411-2-PBS was coated to a plate as the capture antibody and incubated with serial dilutions of standard HZ-1320. 84411-3-PBS was HRP conjugated as the detection antibody. Range: 9.77-313 pg/mL.



Serum of five individual healthy human donors was measured. The IL-1 alpha concentration of detected samples was determined to be 5.0 pg/mL with a range of 1.8-8.2 pg/mL.



Human peripheral blood mononuclear cells (PBMC) were cultured unstimulated or stimulated with 10 μ g/mL PHA for 5 days. The mean IL-1 alpha concentration was determined to be 2.1 pg/mL in unstimulated PBMC supernatant, 880.0 pg/mL in PHA stimulated PBMC supernatant.



The mean IL-1 alpha concentration was determined to be 271.0 ng/mL in mouse liver tissue extract based on a 3.7 mg/mL extract load.