

CD45 Recombinant Matched Antibody Pair, PBS Only

Catalog Number: **MP01280-3**

Capture Antibody Information

Catalog Number:
84405-4-PBS
Host:
Rabbit
Isotype:
IgG
Purification Method:
Protein A purification

Clone ID:
241671G12
Reactivity:
human
GenBank:
Immunogen Catalog Number:
Eg2486

Conjugate:
Unconjugated
Full name:
protein tyrosine phosphatase, receptor type, C
Gene ID:
5788

Detection Antibody Information

Catalog Number:
84405-2-PBS
Host:
Rabbit
Isotype:
IgG
Purification Method:
Protein A purification

Clone ID:
241670F1
Reactivity:
human
GenBank:
Immunogen Catalog Number:
Eg2486

Conjugate:
Unconjugated
Full name:
protein tyrosine phosphatase, receptor type, C
Gene ID:
5788

Applications

Tested Applications:
Sandwich ELISA

Range:
39.1-2500 pg/mL (Sandwich ELISA)

Recommended Dilutions:
It is recommended that this reagent should be titrated in each testing system to obtain optimal results.

Product Information

MP01280-3 targets CD45 in immunoassays as a matched antibody pair. Validated in Sandwich ELISA.

Capture antibody: CD45(220-577) Recombinant antibody, PBS Only (Capture) 84405-4-PBS (241671G12). 100 µg. Concentration 1 mg/mL.

Detection antibody: CD45(220-577) Recombinant antibody, PBS Only (Capture/Detector) 84405-2-PBS (241670F1). 100 µg. Concentration 1 mg/mL.

Unconjugated rabbit recombinant monoclonal antibody pair in PBS only storage buffer at a concentration of 1 mg/mL, ready for conjugation. Created using Proteintech's proprietary in-house recombinant technology. Recombinant production enables unrivalled batch-to-batch consistency, easy scale-up, and future security of supply.

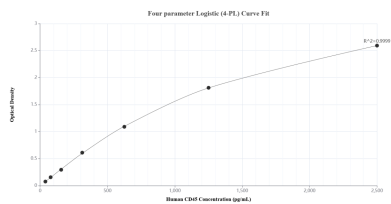
Matched antibody pairs are designed for use in a variety of assays and platforms that require matched antibody pairs.

Antibody use should be optimized for each application and assay.

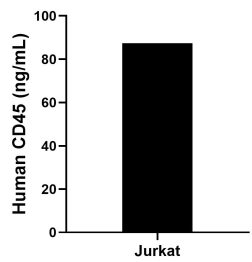
Storage

Storage:
Store at -80°C.
The product is shipped with ice packs. Upon receipt, store it immediately at -80°C
Storage buffer:
PBS only

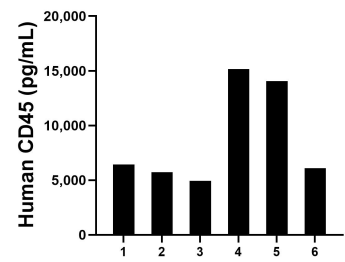
Selected Validation Data



Sandwich ELISA standard curve of MP01280-3, Human CD45 Recombinant Matched Antibody Pair - PBS only. 84405-4-PBS was coated to a plate as the capture antibody and incubated with serial dilutions of standard Eg2486. 84405-2-PBS was HRP conjugated as the detection antibody. Range: 39.1-2500 pg/mL.



The mean CD45 concentration was determined to be 87.3 ng/mL in Jurkat cell extract based on a 1.5 mg/mL extract load.



Plasma of six individual healthy human donors was measured. The CD45 concentration of detected samples was determined to be 8,737.3 pg/mL with a range of 4,942.4 -15,153.0 pg/mL.