

ATG9A Recombinant Matched Antibody Pair, PBS Only

Catalog Number: MP01278-1

Capture Antibody Information

Catalog Number:
84433-1-PBS

Host:
Rabbit

Isotype:
IgG

Purification Method:
Protein A purification

Clone ID:
241652E5

Reactivity:
human

GenBank:
BC065534

Immunogen Catalog Number:
Ag24212

Conjugate:
Unconjugated

Full name:
ATG9 autophagy related 9 homolog A (S. cerevisiae)

Gene ID:
79065

Detection Antibody Information

Catalog Number:
84433-2-PBS

Host:
Rabbit

Isotype:
IgG

Purification Method:
Protein A purification

Clone ID:
241652F9

Reactivity:
human

GenBank:
BC065534

Immunogen Catalog Number:
Ag24212

Conjugate:
Unconjugated

Full name:
ATG9 autophagy related 9 homolog A (S. cerevisiae)

Gene ID:
79065

Applications

Tested Applications:
Cytometric bead array, Sandwich ELISA

Range:
0.313-40 ng/mL (Cytometric Bead Array)
1.56-100 ng/mL (Sandwich ELISA)

Recommended Dilutions:
It is recommended that this reagent should be titrated in each testing system to obtain optimal results.

Product Information

MP01278-1 targets ATG9A in immunoassays as a matched antibody pair. Validated in Cytometric bead array, Sandwich ELISA.

Capture antibody: ATG9A Recombinant antibody, PBS Only (Capture) 84433-1-PBS (241652E5). 100 µg. Concentration 1 mg/mL.

Detection antibody: ATG9A Recombinant antibody, PBS Only (Detector) 84433-2-PBS (241652F9). 100 µg. Concentration 1 mg/mL.

Unconjugated rabbit recombinant monoclonal antibody pair in PBS only storage buffer at a concentration of 1 mg/mL, ready for conjugation. Created using Proteintech's proprietary in-house recombinant technology. Recombinant production enables unrivalled batch-to-batch consistency, easy scale-up, and future security of supply.

Matched antibody pairs are designed for use in a variety of assays and platforms that require matched antibody pairs.

Antibody use should be optimized for each application and assay.

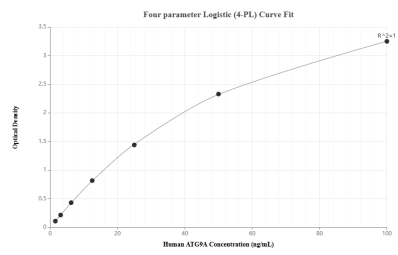
Storage

Storage:
Store at -80°C.

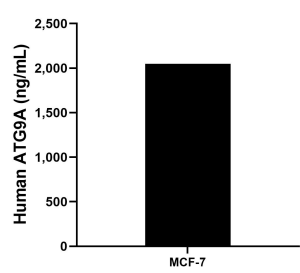
The product is shipped with ice packs. Upon receipt, store it immediately at -80°C

Storage buffer:
PBS only

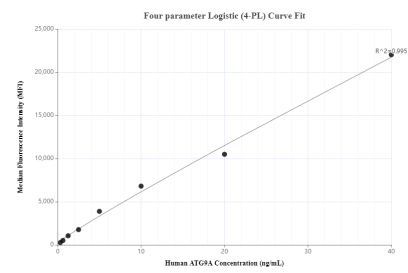
Selected Validation Data



Sandwich ELISA standard curve of MP01278-1, Human ATG9A Recombinant Matched Antibody Pair - PBS only. 84433-1-PBS was coated to a plate as the capture antibody and incubated with serial dilutions of standard Ag24212. 84433-2-PBS was HRP conjugated as the detection antibody. Range: 1.56-100 ng/mL



The mean ATG9A concentration was determined to be 2,049.94 ng/mL in MCF-7 cell extract based on a 1.2 mg/mL extract load.



Cytometric bead array standard curve of MP01278-1, ATG9A Recombinant Matched Antibody Pair, PBS Only. Capture antibody: 84433-1-PBS. Detection antibody: 84433-2-PBS. Standard: Ag24212. Range: 0.313-40 ng/mL