

# Serum amyloid P component Recombinant Matched Antibody Pair, PBS Only

Catalog Number: **MP01275-1**

## Capture Antibody Information

**Catalog Number:**

84402-2-PBS

**Host:**

Rabbit

**Isotype:**

IgG

**Purification Method:**

Protein A purification

**Clone ID:**

241403B5

**Reactivity:**

human

**GenBank:**

BC007058

**Conjugate:**

Unconjugated

**Full name:**

amyloid P component, serum

**Gene ID:**

325

## Detection Antibody Information

**Catalog Number:**

84402-1-PBS

**Host:**

Rabbit

**Isotype:**

IgG

**Purification Method:**

Protein A purification

**Clone ID:**

241403F5

**Reactivity:**

human

**GenBank:**

BC007058

**Conjugate:**

Unconjugated

**Full name:**

amyloid P component, serum

**Gene ID:**

325

## Applications

**Tested Applications:**

Sandwich ELISA

**Range:**

9.77-625 pg/mL (Sandwich ELISA)

**Recommended Dilutions:**

It is recommended that this reagent should be titrated in each testing system to obtain optimal results.

## Product Information

MP01275-1 targets Serum amyloid P component in immunoassays as a matched antibody pair. Validated in Sandwich ELISA.

Capture antibody: Serum amyloid P component Recombinant antibody, PBS Only (Capture) 84402-2-PBS (241403B5). 100 µg. Concentration 1 mg/mL.

Detection antibody: Serum amyloid P component Recombinant antibody, PBS Only (Detector) 84402-1-PBS (241403F5). 100 µg. Concentration 1 mg/mL.

Unconjugated rabbit recombinant monoclonal antibody pair in PBS only storage buffer at a concentration of 1 mg/mL, ready for conjugation. Created using Proteintech's proprietary in-house recombinant technology. Recombinant production enables unrivalled batch-to-batch consistency, easy scale-up, and future security of supply.

Matched antibody pairs are designed for use in a variety of assays and platforms that require matched antibody pairs.

Antibody use should be optimized for each application and assay.

## Storage

**Storage:**

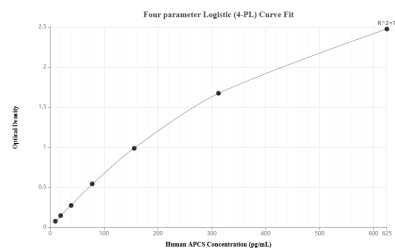
Store at -80°C.

The product is shipped with ice packs. Upon receipt, store it immediately at -80°C

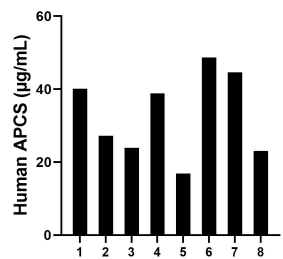
**Storage buffer:**

PBS only

## Selected Validation Data



Sandwich ELISA standard curve of MP01275-1, Human Serum amyloid P component Recombinant Matched Antibody Pair - PBS only. 84402-2-PBS was coated to a plate as the capture antibody and incubated with serial dilutions of standard Eg0528. 84402-1-PBS was HRP conjugated as the detection antibody. Range: 9.77-625 µg/mL



Serum of eight individual healthy human donors was measured. The human Serum amyloid P component concentration of detected samples was determined to be 32.91 µg/mL with a range of 16.86 - 48.68 µg/mL.