

CD89 Recombinant Matched Antibody Pair, PBS Only

Catalog Number: **MP01257-2**

Capture Antibody Information

Catalog Number:
84384-3-PBS

Host:
Rabbit

Isotype:
IgG

Purification Method:
Protein A purification

Clone ID:
241426D1

Reactivity:
human

GenBank:
BC027953

Conjugate:
Unconjugated

Full name:
Fc fragment of IgA, receptor for

Gene ID:
2204

Detection Antibody Information

Catalog Number:
84384-1-PBS

Host:
Rabbit

Isotype:
IgG

Purification Method:
Protein A purification

Clone ID:
241425B2

Reactivity:
human

GenBank:
BC027953

Conjugate:
Unconjugated

Full name:
Fc fragment of IgA, receptor for

Gene ID:
2204

Applications

Tested Applications:
Cytometric bead array, Sandwich
ELISA

Range:
0.156-10 ng/mL (Cytometric Bead
Array)
19.5-1250 pg/mL (Sandwich ELISA)

Recommended Dilutions:
It is recommended that this reagent
should be titrated in each testing
system to obtain optimal results.

Product Information

MP01257-2 targets CD89 in immunoassays as a matched antibody pair. Validated in Cytometric bead array, Sandwich ELISA.

Capture antibody: FCAR Recombinant antibody, PBS Only (Capture) 84384-3-PBS (241426D1). 100 µg.
Concentration 1 mg/mL.

Detection antibody: FCAR Recombinant antibody, PBS Only (Detector) 84384-1-PBS (241425B2). 100 µg.
Concentration 1 mg/mL.

Unconjugated rabbit recombinant monoclonal antibody pair in PBS only storage buffer at a concentration of 1 mg/mL, ready for conjugation. Created using Proteintech's proprietary in-house recombinant technology. Recombinant production enables unrivalled batch-to-batch consistency, easy scale-up, and future security of supply.

Matched antibody pairs are designed for use in a variety of assays and platforms that require matched antibody pairs.

Antibody use should be optimized for each application and assay.

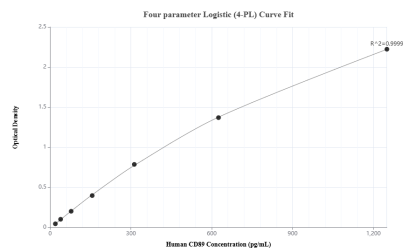
Storage

Storage:
Store at -80°C.

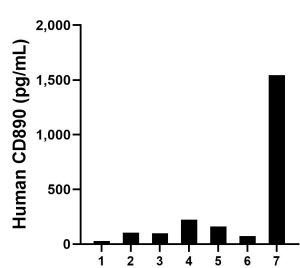
The product is shipped with ice packs. Upon receipt, store it immediately at -80°C

Storage buffer:
PBS only

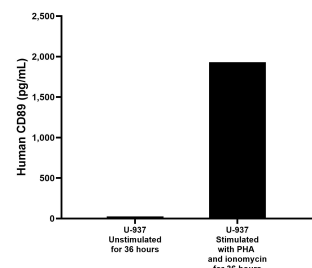
Selected Validation Data



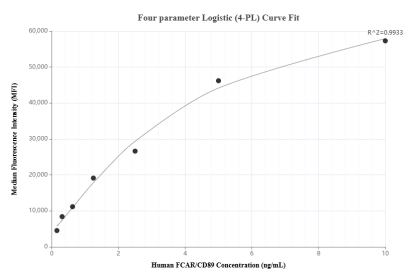
Sandwich ELISA standard curve of MP01257-2, Human CD89 Recombinant Matched Antibody Pair - PBS only. 84384-3-PBS was coated to a plate as the capture antibody and incubated with serial dilutions of standard RP02338. 84384-1-PBS was HRP conjugated as the detection antibody. Range: 19.5-1250 pg/mL



Serum of seven individual healthy human donors was measured. The human CD89 concentration of detected samples was determined to be 319.2 pg/mL with a range of 27.5 - 1,544.1 pg/mL



U-937 cells were cultured unstimulated or stimulated with 10 µg/mL PHA and 1 µg/mL ionomycin for 36 hours. The mean CD89 concentration was determined to be 25.5 pg/mL in unstimulated U-937 supernatant, 1,931.0 pg/mL in stimulated U-937 supernatant.



Cytometric bead array standard curve of MP01257-2, CD89 Recombinant Matched Antibody Pair, PBS Only. Capture antibody: 84384-3-PBS. Detection antibody: 84384-1-PBS. Standard: RP02338. Range: 0.156-10 ng/mL