

C5AR1/CD88 Recombinant Matched Antibody Pair, PBS Only

Catalog Number: **MP01255-4**

Capture Antibody Information

Catalog Number: 84336-8-PBS	Clone ID: 241712E2	Conjugate: Unconjugated
Host: Rabbit	Reactivity: human	Full name: complement component 5a receptor 1
Isotype: IgG	GenBank: NM_001736.4	Gene ID: 728
Purification Method: Protein A purification		

Detection Antibody Information

Catalog Number: 84336-4-PBS	Clone ID: 241712A8	Conjugate: Unconjugated
Host: Rabbit	Reactivity: human	Full name: complement component 5a receptor 1
Isotype: IgG	GenBank: NM_001736.4	Gene ID: 728
Purification Method: Protein A purification		

Applications

Tested Applications: Sandwich ELISA	Range: 0.156-10 ng/mL (Sandwich ELISA)	Recommended Dilutions: It is recommended that this reagent should be titrated in each testing system to obtain optimal results.
---	--	---

Product Information

MP01255-4 targets C5AR1/CD88 in immunoassays as a matched antibody pair. Validated in Sandwich ELISA.

Capture antibody: C5AR1/CD88 Recombinant antibody, PBS Only (Capture) 84336-8-PBS (241712E2). 100 µg. Concentration 1 mg/mL.

Detection antibody: C5AR1/CD88 Recombinant antibody, PBS Only (Capture/Detector) 84336-4-PBS (241712A8). 100 µg. Concentration 1 mg/mL.

Unconjugated rabbit recombinant monoclonal antibody pair in PBS only storage buffer at a concentration of 1 mg/mL, ready for conjugation. Created using Proteintech's proprietary in-house recombinant technology. Recombinant production enables unrivalled batch-to-batch consistency, easy scale-up, and future security of supply.

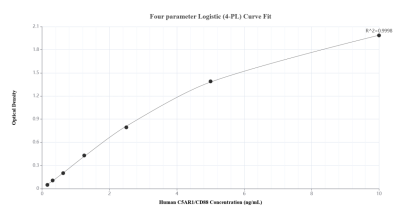
Matched antibody pairs are designed for use in a variety of assays and platforms that require matched antibody pairs.

Antibody use should be optimized for each application and assay.

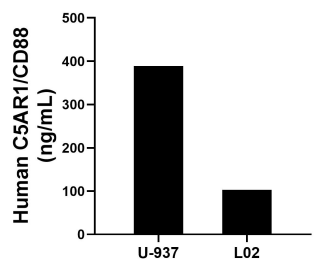
Storage

Storage:
Store at -80°C.
The product is shipped with ice packs. Upon receipt, store it immediately at -80°C
Storage buffer:
PBS only

Selected Validation Data



Sandwich ELISA standard curve of MP01255-4, Human C5AR1/CD88 Recombinant Matched Antibody Pair - PBS only. 84336-8-PBS was coated to a plate as the capture antibody and incubated with serial dilutions of standard Eg2185. 84336-4-PBS was HRP conjugated as the detection antibody. Range: 0.156-10 ng/mL



The mean C5AR1/CD88 concentration was determined to be 388.97 ng/mL in U-937 cell extract based on a 2.20 mg/mL extract load and 103.14 ng/mL in L02 cell extract based on a 1.30 mg/mL extract load.