

# Mouse CD2 Recombinant Matched Antibody Pair, PBS Only

Catalog Number:MP01249-1

## Capture Antibody Information

**Catalog Number:**

84360-5-PBS

**Host:**

Rabbit

**Isotype:**

IgG

**Purification Method:**

Protein A purification

**Clone ID:**

241548E11

**Reactivity:**

mouse

**GenBank:**

NM\_013486.2

**Conjugate:**

Unconjugated

**Full name:**

CD2 antigen

**Gene ID:**

12481

## Detection Antibody Information

**Catalog Number:**

84360-4-PBS

**Host:**

Rabbit

**Isotype:**

IgG

**Purification Method:**

Protein A purification

**Clone ID:**

241548D7

**Reactivity:**

mouse

**GenBank:**

NM\_013486.2

**Conjugate:**

Unconjugated

**Full name:**

CD2 antigen

**Gene ID:**

12481

## Applications

**Tested Applications:**

Cytometric bead array, Sandwich ELISA

**Range:**0.313-40 ng/mL (Cytometric Bead Array)  
19.5-1250 pg/mL (Sandwich ELISA)**Recommended Dilutions:**

It is recommended that this reagent should be titrated in each testing system to obtain optimal results.

## Product Information

MP01249-1 targets CD2 in immunoassays as a matched antibody pair. Validated in Cytometric bead array, Sandwich ELISA.

Capture antibody: Mouse CD2 Recombinant antibody, PBS Only (Capture) 84360-5-PBS (241548E11). 100 µg. Concentration 1 mg/mL.

Detection antibody: Mouse CD2 Recombinant antibody, PBS Only (Detector) 84360-4-PBS (241548D7). 100 µg. Concentration 1 mg/mL.

Alternative CD2 matched antibody pairs: MP01045-1, MP01045-2, MP01045-3, MP01045-4, MP01249-2, MP01249-3

Unconjugated rabbit recombinant monoclonal antibody pair in PBS only storage buffer at a concentration of 1 mg/mL, ready for conjugation. Created using Proteintech's proprietary in-house recombinant technology. Recombinant production enables unrivalled batch-to-batch consistency, easy scale-up, and future security of supply.

Matched antibody pairs are designed for use in a variety of assays and platforms that require matched antibody pairs.

Antibody use should be optimized for each application and assay.

## Storage

**Storage:**

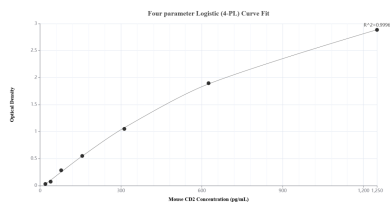
Store at -80°C.

The product is shipped with ice packs. Upon receipt, store it immediately at -80°C

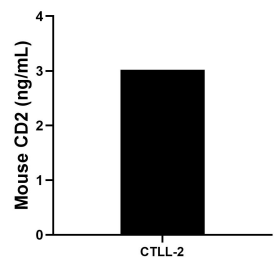
**Storage buffer:**

PBS only

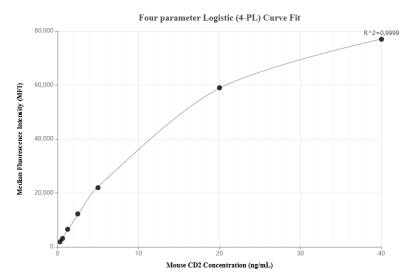
## Selected Validation Data



Sandwich ELISA standard curve of MP01249-1, Mouse CD2 Recombinant Matched Antibody Pair - PBS only. 84360-5-PBS was coated to a plate as the capture antibody and incubated with serial dilutions of standard Eg1403. 84360-4-PBS was HRP conjugated as the detection antibody. Range: 19.5-1250 pg/mL.



The mean CD2 concentration was determined to be 3.0 ng/mL in CTLL-2 cell extract based on a 0.9 mg/mL extract load.



Cytometric bead array standard curve of MP01249-1, MOUSE CD2 Recombinant Matched Antibody Pair, PBS Only. Capture antibody: 84360-5-PBS. Detection antibody: 84360-4-PBS. Standard: Eg1403. Range: 0.313-40 ng/mL.