

RAPGEF2 Recombinant Matched Antibody Pair, PBS Only

Catalog Number: **MP01235-2**

Capture Antibody Information

Catalog Number:
84331-3-PBS
Host:
Rabbit
Isotype:
IgG
Purification Method:
Protein A purification

Clone ID:
241637H7
Reactivity:
human
GenBank:
NM_014247.2
Immunogen Catalog Number:
Ag35288

Conjugate:
Unconjugated
Full name:
Rap guanine nucleotide exchange factor (GEF) 2
Gene ID:
9693

Detection Antibody Information

Catalog Number:
84331-2-PBS
Host:
Rabbit
Isotype:
IgG
Purification Method:
Protein A purification

Clone ID:
241637C6
Reactivity:
human
GenBank:
NM_014247.2
Immunogen Catalog Number:
Ag35288

Conjugate:
Unconjugated
Full name:
Rap guanine nucleotide exchange factor (GEF) 2
Gene ID:
9693

Applications

Tested Applications:
Sandwich ELISA

Range:
156-5000 pg/mL (Sandwich ELISA)

Recommended Dilutions:
It is recommended that this reagent should be titrated in each testing system to obtain optimal results.

Product Information

MP01235-2 targets RAPGEF2 in immunoassays as a matched antibody pair. Validated in Sandwich ELISA.

Capture antibody: RAPGEF2 Recombinant antibody, PBS Only (Capture) 84331-3-PBS (241637H7). 100 µg. Concentration 1 mg/mL.

Detection antibody: RAPGEF2 Recombinant antibody, PBS Only (Detector) 84331-2-PBS (241637C6). 100 µg. Concentration 1 mg/mL.

Unconjugated rabbit recombinant monoclonal antibody pair in PBS only storage buffer at a concentration of 1 mg/mL, ready for conjugation. Created using Proteintech's proprietary in-house recombinant technology. Recombinant production enables unrivalled batch-to-batch consistency, easy scale-up, and future security of supply.

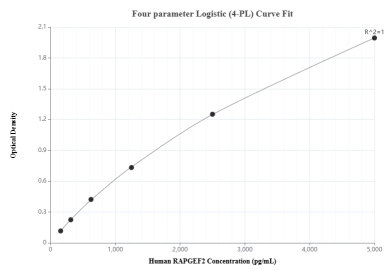
Matched antibody pairs are designed for use in a variety of assays and platforms that require matched antibody pairs.

Antibody use should be optimized for each application and assay.

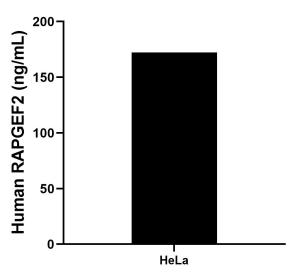
Storage

Storage:
Store at -80°C.
The product is shipped with ice packs. Upon receipt, store it immediately at -80°C
Storage buffer:
PBS only

Selected Validation Data



Sandwich ELISA standard curve of MP01235-2, Human RAPGEF2 Recombinant Matched Antibody Pair - PBS only. 84331-3-PBS was coated to a plate as the capture antibody and incubated with serial dilutions of standard Ag35288. 84331-2-PBS was HRP conjugated as the detection antibody. Range: 156-5000 pg/mL



The mean RAPGEF2 concentration was determined to be 172.25 ng/mL in HeLa cell extract based on a 1.5 mg/mL extract load.